

Atlantic Technical College and Technical High School



Summer Schedule 2021

Atlantic Technical College and Technical High School will still offer some programs via an online platform (e-Learning); however, students have the option to return to campus for face-to-face instruction.

What you do today creates a better tomorrow!



3 Broward Locations:

**Main Campus - Coconut Creek
Arthur Ashe, Jr. Campus
ESOL Campus @ Coconut Creek HS**

GET THERE
with Atlantic Technical College



www.CareerinayearFL.com

Stay Connected



Robert B. Crawford, Director
All Campuses



www.atlantictechnicalcollege.edu



ATLANTIC TECHNICAL COLLEGE AND TECHNICAL HIGH SCHOOL

MAIN CAMPUS

Assistant Directors:

Brian Bush | John M. Felser
Tonya S. Hefley | Vicky LaPorte
Dr. Wesley M. Mabin, Jr.
Neeta E. Rancourt

4700 Coconut Creek Parkway
Coconut Creek, Florida 33063
Tel: 754-321-5100 | Fax: 754-321-5380

ARTHUR ASHE, JR. CAMPUS

Andre L. Newton, Assistant Director

1701 Northwest 23rd Avenue
Fort Lauderdale, Florida 33311
Tel: 754-322-2800 | Fax: 754-322-2880

ESOL CAMPUS @ COCONUT CREEK HS

Brian Bush, Assistant Director

1400 Northwest 44th Avenue
Coconut Creek, Florida 33066
Tel: 754-321-5350

Alicia Grigull, Director
Office of Student Affairs
All Campuses

REGISTRATION: CAREER and TECHNICAL EDUCATION (CTE)

Re-Registration For Current CTE Students

Begins: **MAY 17, 2021**

Registration For New CTE Students

Begins: **ONGOING**

CTE Summer Term Begins: **JUNE 11, 2021**

CTE Summer Term Ends: **AUGUST 10, 2021**

SCHOOL HOURS OF OPERATION:

MAIN CAMPUS

Monday - Thursday	7:00 a.m. - 10:00 p.m.
Friday	7:00 a.m. - 4:00 p.m.
Saturday	7:00 a.m. - 12:00 p.m.

ARTHUR ASHE, JR. CAMPUS

Monday - Friday	8:00 a.m. - 4:00 p.m.
-----------------	-----------------------

ESOL CAMPUS @ COCONUT CREEK HS (Through June 11, 2021)

Monday - Friday	8:00 a.m. - 4:00 p.m.
-----------------	-----------------------

2020 - 2021 School Calendars
see page 34

Accredited/Approved by:

Commission of the Council on Occupational Education (COE)
7840 Roswell Road, Bldg. 300, Ste. 325, Atlanta, GA 30350
800-917-2081 • FAX 770-396-3790 • www.council.org

Cognia™ (formerly AdvancED)
9115 Westside Parkway, Alpharetta, GA 30009
888-413-3669 • www.cognia.org

Accreditation Commission for Education in Nursing (ACEN)
3390 Peachtree Rd., NE • Ste. 1400 • Atlanta, GA 30326
404-975-5000 • Fax: 404-975-5020 • www.acenursing.org

Commission on Dental Accreditation (CODA)
211 East Chicago Avenue • Chicago, IL 60611
312-440-4653 • www.ada.org/en/coda

American Culinary Federation Education Foundation (ACFEF)

ASE Education Foundation

Florida Board of Nursing

Florida Department of Education (FLDOE)

National Court Reporters Association (NCRA)

National Restaurant Association Educational Foundation (NRAEF)

Pharmacy Technician Certification Board (PTCB)

State Approving Agency for Veterans' Education and Training
Florida Department of Veterans' Affairs



Certification Reimbursement Plan

Pass a State approved industry certification exam aligned to your program of study and we will help you pay for it. See your program counselor/advisor for details and conditions.

College Credit Eligibility

In many programs, students who have met all eligibility requirements to become a program graduate may also be awarded college credits from Broward College and other Florida state colleges/community colleges toward an Associate Degree. Students must enroll within two (2) years of completing their program at Atlantic Technical College. See your program counselor/advisor for details and conditions.

Guarantee for Success

Atlantic Technical College and Technical High School (ATC) is committed to teaching the skills you need for the career you desire. We are proud to stand behind our graduates and the education they receive. To demonstrate our support, we offer the Guarantee for Success Plan. If a graduate of ATC does not pass the identified, entry-level, industry certification test in his or her field of study, the student is invited to return for additional training and/or test preparation at no additional cost. See your program counselor/advisor for details and conditions.

BE SAFE. STAY SAFE.

THE FOLLOWING PRECAUTIONARY MEASURES HAVE BEEN PUT IN PLACE



FACILITIES CLEAN TEAM IS ON SITE



MANDATORY MASKS



PRACTICE SOCIAL DISTANCING



ELECTRONIC SANITATION SYSTEM



HAND SANITIZING STATIONS THROUGHOUT THE CAMPUS



TO GET STARTED IN A CAREER/TECHNICAL PROGRAM

STEP 1

ATTEND A PROGRAM SPECIFIC ORIENTATION

Applicants for technical programs must attend a program specific orientation. Currently all orientations are being held via counselor/advisor led video conferencing. To sign up for an Orientation, visit www.atlanticttechnicalcollege.edu/getting-started and follow the three steps indicated to register.

STEP 2

REPLY TO YOUR ORIENTATION FOLLOW-UP EMAIL

Refer to your orientation follow up email for details on exemption criteria and signing up for the tests. Accommodations for testing are available to qualified individuals. Contact the Disability Services Advisor on your campus for eligibility details prior to registering for testing.

Orientation is not offered on Fridays, Holidays or "days off" that are approved by the School Board of Broward County, Florida.

STEP 3

COMPLETE AN APPLICATION

Complete the application at <https://broward.focusschoolsoftware.com/focus/apply/>.

STEP 4

APPLY FOR FINANCIAL AID (OPTIONAL)

Prospective students requesting financial assistance must complete the online Free Application for Federal Student Aid (FAFSA) as soon as possible. This step is optional. If you do not require financial assistance, proceed to step 5. This step can be completed simultaneously with the admissions process.

STEP 5

DISABILITY SERVICES (OPTIONAL)

Prospective students who wish to self-identify as having a documented disability may request reasonable accommodations for testing and classroom instruction. This step is optional. If you do not require disability services, proceed to step 6.

STEP 6

COMPLETE AND UPLOAD REQUIRED DOCUMENTS

Log into your Focus Portal and access the Forms on the toolbar. Complete the Technical College New Student Forms and upload the required documents.

Once documents are uploaded, contact the appropriate staff member to review submitted documents.

STEP 7

COUNSELOR INTERVIEW

After you have contacted your counselor, they will review your application and documents, assist you with any questions/concerns, approve your registration packet, and move to the next department as required.

STEP 8

REGISTRATION AND ENROLLMENT

Once your registration packet has been approved and you have your funding, you are ready to register. You will receive an email with directions on how to complete your online registration, pay any required fees and finalize your enrollment.

COSTS LISTED IN THIS PUBLICATION REFLECT FEES FOR THE CURRENT ENROLLMENT PERIOD UNLESS OTHERWISE NOTED.

- In-state fees this enrollment period for Career and Technical Education programs include: a \$40 non-refundable registration fee for an 18 week semester or a \$20 non-refundable registration fee for a 9 week term; tuition; applicable lab fees; and a non-refundable \$13 insurance fee for Health Science programs. There is an annual \$20 student activity fee for all programs.
- Applicants enrolling in a certificate program must provide documentation showing 12 consecutive months of Florida Residency to be eligible for in-state tuition and fees; non-resident tuition and fees are higher.
- Applicants enrolled in a Lifelong Learning (LL) course pay an hourly rate plus a \$20 non-refundable registration fee and an annual \$20 student activity fee.
- Tuition and lab fees are subject to change by the Florida Legislature and/or Broward County Public Schools.
- Payment is due at time of registration.
- Standard Enrollment Period: 18 weeks (fall & winter semesters); 9 weeks (summer term). Please note, Pre-College programs are on a trimester calendar.
- Registration is on a first come, first served basis.
- Classes not meeting minimum enrollment requirements will be canceled.
- Career Dual Enrollment (CDE) is offered to high school students meeting specific entry criteria. For additional information visit www.atlantictechcollege.edu/career-dual-enrollment.
- All Career and Technical Education (CTE) programs are approved for Veterans benefits by the State Approving Agency.

PROGRAM OFFERINGS AND MORE

Office of Student Affairs	6
Career Center and Alumni Relations	9
Campus Locations	10
Pre-College Academic Studies	
GED® Test Preparation	11
Applied Academics	11
Adult Basic Education	12
Pre-College ESOL	12
Rapid Credentialing / Career and Technical Education (CTE) Programs	
Rapid Credentialing.....	14
Career and Technical Education (CTE) Programs	
Architecture and Construction	17
Business Management and Administration	19
Lifelong Learning - Business Management and Administration	23
Health Science and Practical Nursing	24
Hospitality and Tourism	30
Information Technology	31
Manufacturing	33
Transportation, Distribution and Logistics	34
Apprenticeship	36
Certification/Licensure Exams (Industry Credentials)	37
School Calendars	38

OFFICE OF STUDENT AFFAIRS OFFICE HOURS

Please schedule an appointment through QLess by scanning the QR Code
or visit : <https://kiosk.na6.qless.com/kiosk/app/home/16>



MAIN CAMPUS (754-321-5200)

Monday - Friday	7:00 a.m. - 4:00 p.m.	Building 10
-----------------	-----------------------	-------------

ARTHUR ASHE, JR. CAMPUS (754-322-2800)

Pre-College Programs

Monday - Friday	8:00 a.m. - 4:00 p.m.	Learning Commons, Room 205
-----------------	-----------------------	----------------------------

Career and Technical Education

Monday - Friday	8:00 a.m. - 4:00 p.m.	Building 2, Room 206
-----------------	-----------------------	----------------------

ESOL CAMPUS @ COCONUT CREEK HS - DAY - Through June 9, 2021 (754-321-5350)

Monday - Friday	8:00 a.m. - 4:00 p.m.	Portable 17
-----------------	-----------------------	-------------

ESOL - MAIN CAMPUS - DAY - June 11, 2021 - August 10, 2021 (754-321-5200)

Monday - Friday	8:00 a.m. - 4:00 p.m.	Building 10
-----------------	-----------------------	-------------





CERTIFIED SCHOOL COUNSELORS & ADVISORS **(Technical Programs)**

Alicia Grigull, Director, Office of Student Affairs
Alicia.Grigull@browardschools.com | 754-321-5177

Dana Allen, Certified School Counselor

754-322-2818

Dana.Allen@browardschools.com

Arthur Ashe, Jr. Campus

1701 NW 23rd Avenue | Fort Lauderdale, FL 33311

Health Science and Practical Nursing

Practical Nursing

Ruth Eloi, Certified School Counselor

754-321-5187

Ruth.Eloi@browardschools.com

Health Science

Central Sterile Processing Technician | Dental Assisting Technology and Management (ATD) |
Electrocardiograph Technology | Hemodialysis Technician | Medical Assisting |
Medical Coder/Biller (ATD) | Mental Health Technician | Orthopedic Technology |
Patient Care Assistant (Rapid Credentialing) | Patient Care Technician | Pharmacy Technician (ATD)

Doris Gonzalez, Certified School Counselor

754-321-5188

Doris.Gonzalez@browardschools.com

Business Management and Administration

Accounting Operations | Administrative Office Specialist | Business Management and Analysis |
Court Reporting Technology; 2 and 3 | Customer Assistance Technology |
Legal Administrative Specialist | Medical Administrative Specialist

Hospitality & Tourism

Professional Culinary Arts and Hospitality

Vania Humphrey, Certified School Counselor

754-321-5167

VDHumphrey@browardschools.com

Architecture and Construction

Carpentry | Drafting | Electricity | Heating, Ventilation, Air-Conditioning/Refrigeration (HVAC/R) (also Rapid
Credentialing)

Manufacturing

Machining Technologies | Welding Technology

Brooke Lehmejian, Certified School Counselor

754-321-5266

Brooke.Lehmejian@browardschools.com

Information Technology

Applied Information Technology | Database Application Development and Programming |
Network Support Services (also Rapid Credentialing) | Web Development

Transportation, Distribution and Logistics

Advanced Automotive Service Technology (Toyota T-TEN) | Automotive Collision Technology Technician |
Automotive Service Technology (also Rapid Credentialing) | Avionics Systems Technician

CERTIFIED SCHOOL COUNSELORS & ADVISORS
(Pre-College Programs and High School)

Nabila Bouqlata, Career Advisor

754-321-5263

Nabila.Bouqlata@browardschools.com

Pre-College Academic Studies Career Advisor | Success Coach | GED® Test Preparation

Cindy Burdick, Certified School Counselor

754-322-2852

Cindy.Burdick@browardschools.com

Arthur Ashe, Jr. Campus

1701 NW 23rd Avenue | Fort Lauderdale, FL 33311

Pre-College Program Counselor | Adult Career Pathways | Success Coach | GED® Test Preparation

Mary Kahn, Career Advisor

754-321-5257

Mary.Kahn@browardschools.com

Pre-College Academic Studies Career Advisor | Success Coach | GED® Test Preparation

Chandler White, Certified School Counselor

754-321-5164

Chandler.White@browardschools.com

Pre-College Academic Studies Counselor | Adult Career Pathways | Success Coach | GED® Test Preparation

Alba Guadalupe, Certified School Counselor

754-321-5269

Alba.Guadalupe@browardschools.com

Guidance Director - High School | Certified School Counselor 11th and 12th Grade

Kimberly Jackson, Certified School Counselor

754-321-5165

Kimberly.Jackson@browardschools.com

Certified School Counselor - High School 9th and 10th Grade



SUPPORT SERVICES

<i>Soraya Aleman</i>	Director, Office of Financial Aid	754-321-5185
<i>Hallema Collier</i>	Magnet Coordinator Career Dual Enrollment Liaison	754-321-5307
<i>Elizabeth DeJesus</i>	BRACE Advisor	754-321-5115
<i>Meryl Eisenberg</i>	504 Liaison Disability Services Advisor	754-321-5259
<i>Debbie Evangelista</i>	ESE Specialist - High School	754-321-5193
<i>Roseanne Farino</i>	Apprenticeship Coordinator	754-321-5119
<i>Vera Alvarez - Fernandez</i>	International Student Advisor	754-321-5737
<i>Rebecca Miller</i>	Career and Technical Education Advisor, High School	754-321-5122
<i>Rosemary Petrill</i>	Industry Certifications	754-321-5305
<i>Joanne Santana</i>	Veterans School Certifying Official	954-614-1608
<i>Teresa Skiles</i>	ESE Support Facilitator - High School	754-321-5308
<i>Jean Vilus</i>	ESOL Career Advisor/Department Chair	754-321-5352
<i>Nicole Willis</i>	Business & Economic Development Career Services Advisor Job Placement Assistance	754-321-5179
<i>Tia Wright</i>	Career Services Advisor Recruitment	754-322-2821

CAREER CENTER AND ALUMNI RELATIONS

CAREER CENTER SERVICES

Nicole Willis
754-321-5179
Nicole.Willis@browardschools.com

- Job Placement Assistance
- Resume Reviews
- Interview Skills/Big Interview Website
- College Central Network Job Board
- Job/Career Fairs

Employers/Students/Alumni:
Be sure to register on College Central
www.collegecentral.com/atlanticttechnicalcollege

Hours of Operation:
Monday - Friday
8:30 a.m. to 3:30 p.m.

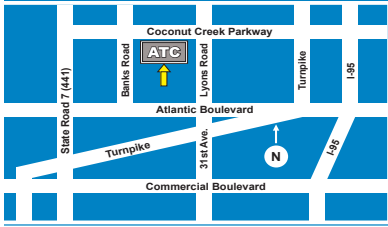
ALUMNI ASSOCIATION

Jennifer Long
754-321-5802
Jennifer.Long@browardschools.com

- Access to College Central Network
- Alumni Spotlights
- Registration in the Alumni Directory
- Seminars
- Social Networking Events

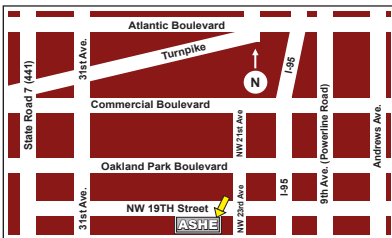


CAMPUS LOCATIONS



Atlantic Technical College - Main Campus
4700 Coconut Creek Parkway | Coconut Creek, FL 33063
754-321-5100

The main campus is located in northern Broward County between Lyons Road and State Road 7 (441), on the corner of Coconut Creek Parkway and Banks Road.



Atlantic Technical College - Arthur Ashe, Jr. Campus
1701 Northwest 23rd Avenue | Fort Lauderdale, FL 33311
754-322-2800

The Arthur Ashe, Jr. Campus is located in central Broward County between 31st Avenue (Martin Luther King, Jr. Blvd.) and 9th Avenue (Powerline Road) on the corner of 19th Street and NW 23rd Avenue.



Atlantic Technical College - ESOL Campus @ Coconut Creek HS
1400 Northwest 44th Avenue | Coconut Creek, FL 33066
754-321-5350

The ESOL Campus @ Coconut Creek HS is located in northern Broward County between the Florida Turnpike and Lyons Road, on the corner of Coconut Creek Parkway and NW 43rd Avenue.



PRE-COLLEGE ACADEMIC STUDIES

EARN YOUR HIGH SCHOOL DIPLOMA!

GED® TEST PREPARATION

offered in English and Spanish!

GED® TEST PREPARATION (Placement Test Required)

Remote and on-campus testing is available by appointment only.

For the student who needs to prepare for the GED® Test, instruction is provided in Reasoning through Language Arts, Mathematical Reasoning, Science and Social Studies.

ENGLISH

MAIN CAMPUS- Class times

Nabila Bouqlata | Career Advisor (754-321-5263)

Monday - Friday	8:00 a.m. - 2:30 p.m.	\$30
Monday - Thursday	5:00 p.m. - 9:00 p.m.	\$30
Saturday	8:00 a.m. - 12:00 p.m.	\$30

ARTHUR ASHE, JR. CAMPUS - Class times

Cindy Burdick | Certified School Counselor (754-322-2852)

Monday - Friday	8:00 a.m. - 2:30 p.m.	\$30
-----------------	-----------------------	------

SPANISH

MAIN CAMPUS ONLY

Cristina Urena | Instructor (754-322-2803)

EVENINGS - HYBRID (classroom & distance delivery)

APPLIED ACADEMICS

APPLIED ACADEMICS FOR ADULT EDUCATION

For students who are seeking to improve their academic skills to succeed in a certificate program, and/or in the workplace, instruction is provided in Reading, Math and Language.

MAIN CAMPUS - Class times

Chandler White | Certified School Counselor (754-321-5164)

Monday - Friday	8:00 a.m. - 2:30 p.m.	\$30
Monday - Thursday	5:00 p.m. - 9:00 p.m.	\$30
Saturday	8:00 a.m. - 12:00 p.m.	\$30

ARTHUR ASHE, JR. CAMPUS - Class times

Cindy Burdick | Certified School Counselor (754-322-2852)

Monday - Friday	8:00 a.m. - 2:30 p.m.	\$30
-----------------	-----------------------	------

Note: The Council on Occupational Education (COE) does not accredit avocational programs such as ESOL, ABE, GED® Test Preparation, AAAE or Apprenticeship. In addition, these programs do not qualify for Title IV financial aid assistance.

“Ask us how you can earn your High School Diploma and a Technical Certificate at the same time!”

TUITION for GED® Test Preparation and Applied Academics

\$30 flat fee per trimester for all GED® Test Preparation and Applied Academics classes. Applies to in-state and out-of-state residents. \$20 annual activity fee / \$15 testing fee.

REGISTRATION SCHEDULE for GED® Test Preparation & Applied Academics

MAIN CAMPUS - Building 10

Monday - Friday	7:00 a.m. - 4:00 p.m.
-----------------	-----------------------

ARTHUR ASHE, JR. CAMPUS Building 2, Learning Commons

Monday - Friday	8:00 a.m. - 4:00 p.m.
-----------------	-----------------------

Online classes are also available - \$30



Mandatory Masks



Wash Hands Frequently



Practice Social Distancing - 6 ft.

Pre-College Academic Studies - continued

ADULT BASIC EDUCATION

The Adult Basic Education (ABE) program provides students with academic skills that are necessary for entrance into the GED® Preparation courses as well as the Applied Academics for Adult Education program. ABE courses focus on Reading, Language and Mathematics with student progress being measured by the Basic Skills Test.

This program is open-entry/open-exit, which allows students to begin and complete the program at their individual pace. Instructors are highly qualified experts in their subject and available for face-to-face or online support.

MAIN CAMPUS - Class times

Chandler White | Certified School Counselor (754-321-5164)

Monday - Friday	8:00 a.m. - 2:30 p.m.	\$30
Monday - Thursday	5:00 p.m. - 9:00 p.m.	\$30
Saturday	8:00 a.m. - 12:00 p.m.	\$30

Online classes are also available - \$30

PRE-COLLEGE ESOL

English for Speakers of Other Languages

The ESOL program prepares English Language Learners with the skills to communicate in English, to improve job skills, and to further their technical and academic studies.

ARTHUR ASHE, JR. CAMPUS - Class times

Cindy Burdick | Certified School Counselor (754-322-2852)

Monday - Friday	8:00 a.m. - 2:30 p.m.	\$30
-----------------	-----------------------	------

ESOL CAMPUS @ COCONUT CREEK HS - Class times (Through June 11, 2021)

Jean Vilus | Career Advisor (754-321-5352)

Monday - Friday	8:00 a.m. - 2:30 p.m.	\$30
-----------------	-----------------------	------

ESOL - MAIN CAMPUS - Days - Class times (June 14, 2021 - July 30, 2021)

Jean Vilus | Career Advisor (754-321-5352)

Monday - Friday	8:00 a.m. - 2:30 p.m.	\$30
-----------------	-----------------------	------

NIGHT & SATURDAY - Main Campus Only - Class times

Jean Vilus | Career Advisor (754-321-5352)

Monday - Thursday	5:00 p.m. - 9:00 p.m.	\$30
Saturday	8:00 a.m. - 12:00 p.m.	\$30

TUITION for ESOL

\$30 flat fee per trimester for all ESOL classes.
Applies to in-state and out-of-state residents.
\$20 annual activity fee / \$15 testing fee.

REGISTRATION SCHEDULE for ESOL

All new students must take the CASAS Placement Test prior to registration. See testing information on page 13. Call 754-321-5200 for information.

ARTHUR ASHE, JR. CAMPUS

Building 2, Learning Commons

Monday - Friday	8:00 a.m. - 3:00 p.m.
-----------------	-----------------------

ESOL CAMPUS @ COCONUT CREEK HS

(Through June 11, 2021) - Portable 17

Monday - Friday	8:00 a.m. - 3:00 p.m.
-----------------	-----------------------

ESOL - MAIN CAMPUS - Days - Class times

(June 14 - July 30, 2021)

Monday - Friday	8:00 a.m. - 3:00 p.m.
-----------------	-----------------------

ESOL - continued**INTEGRATED EDUCATION AND TRAINING
TECHNICAL PROGRAMS**

This program gives English Language Learners the skills to communicate in English and prepares the student to enter a certificate program in Business, Health, or Information Technology. This is part of Florida's Integrated Education and Training and only available at Atlantic Technical College. For more information, contact the program advisor at 754-321-5352.

Classes are held on the Main Campus.

CASAS TESTING INFORMATION

Required for ESOL classes.

Remote and on-campus testing is available by appointment only.

For more information, contact 754-321-5200.

- Testing Fee: \$15
- Arrive at least fifteen (15) minutes before start time.
- Accommodations for testing and classes are available to qualified individuals. For additional information, please contact the 504 Liaison (**before testing**) at one of the following locations: ATC Main Campus 754-321-5259; Arthur Ashe, Jr. Campus 754-322-2818; and ESOL Campus @ Coconut Creek HS 754-321-5352.

**On Campus Testing Locations:**

ARTHUR ASHE, JR. CAMPUS

(754-322-2800)

Building 2, Learning Commons

ESOL CAMPUS @ COCONUT CREEK HS

(754-321-5350) - Through June 9, 2021

Portable 17

MAIN CAMPUS

(754-321-5200)

Building 6



RAPID CREDENTIALING / CAREER AND TECHNICAL EDUCATION (CTE) PROGRAMS



Programs that can be completed in one (1) year or less.

ATC is approved by the Commission of the Council on Occupational Education (COE) to deliver career and technical education instruction using the following instructional methods:

Traditional: 100% classroom-based

Hybrid: Less than 50% of required instructional hours available via distance education (online)

Distance Education: 50% or more of required instructional hours available via distance education (online)

Rapid Credentialing

Rapid Credentialing was established by the Department of Education to provide Floridians with the essential skills to accelerate Florida's economic recovery.

For more information, e-mail KathieDileonardo@browardschools.com.

AUTOMOTIVE SERVICE TECHNOLOGY (AST)

Automotive Brake Systems Technician

Program Length: 450 hours

Program Cost: \$1,525 (approximate tuition & fees)

Program Offered: May 7, 2021

Delivery Method: Traditional - 100% classroom based

Credential: ASE A5 Brakes



Students in the AST program are initially trained in the use of technical and flat-rate information systems, as well as a variety of hand and power tools. Following the introduction course, students will receive specialty training in automotive braking systems. All instruction is in alignment with the ASE Education Foundation for professional technician certification and provides for completers of the program to sit for the ASE A5 Brakes industry credential.

Days	Times	Hours and Costs this term	
Monday - Friday	7:05 a.m. - 1:50 p.m.	252 hours	\$872

HEATING, VENTILATION, AIR CONDITIONING/REFRIGERATION (HVAC/R)

HVAC/R Technician

Program Length: 500 hours

Program Cost: \$1,740 (approximate tuition & fees)

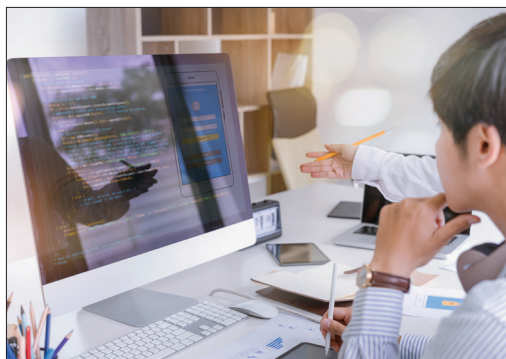
Program Offered: March 29, 2021

Delivery Method: Traditional - 100% classroom based

Credential: EPA Section 608 and HVAC Excellence – Electrical

Students entering the HVAC/R Technician (Rapid Credential) program will become proficient in the installation, repair, and maintenance of residential and commercial air conditioning, refrigeration and heating systems. Heavy emphasis is placed on electrical systems. The HVAC/R students will also receive instruction in layout and design of electrical system schematics. All instruction is in alignment with the EPA, as well as HVAC Excellence's alignment to national standards for the professional technician.

Days	Times	Hours and Costs this term	
Monday - Friday	7:05 a.m. - 1:50 p.m.	504 hours	\$1,773



NETWORK SUPPORT SERVICES - COMPTIA A+

CompTIA A+ Certification Preparation

Program Length: 300 hours

Program Cost: \$955 (approximate tuition & fees)

Program Offered: April 23, 2021

Delivery Method: Distance - 50% or more instruction hours via distance (online)

Credential: CompTIA A+

This course prepares students for entry-level employment in the Information Technology field such as a Computer User Support Specialist. Students will have the opportunity to earn their CompTIA A+ industry standard certification.

Blended Distance: with mandatory on-campus weekly labs

Days	Times	Hours and Costs this term	
Distance:	Monday - Friday	5:30 p.m. - 8:30 p.m.	300 hours
On-campus Labs:	Thursday		\$955

There may be additional costs associated with books, uniforms, specific tools, equipment and other related items.

NETWORK SUPPORT SERVICES - COMPTIA NETWORK+*CompTIA Network+ Certification Preparation***Program Length:** 300 hours**Program Cost:** \$955 (approximate tuition & fees)**Program Offered:** April 23, 2021**Delivery Method:** Distance - 50% or more instruction hours via distance (online)**Credential:** CompTIA Network+

This program prepares students for entry-level employment in the Information Technology field such as a Network and Computer Systems Administrator. Students will have the opportunity to earn their CompTIA Network+ industry standard certification.

100% Distance: with mandatory virtual meetings

Days	Times	Hours and Costs this term	
Distance: Monday - Friday	5:30 p.m. - 9:30 p.m.	168 hours	\$552
Virtual Meeting: Tuesday, Thursday			

**PATIENT CARE ASSISTANT (Arthur Ashe, Jr. Campus)****Program Length:** 290 hours**Program Cost:** \$923 (approximate tuition & fees)**Program Offered:** May 26, 2021**Delivery Method:** Traditional - 100% classroom based**Credential:** Certified Nursing Assistant (CNA)

The curriculum prepares students for employment as cross-trained nursing assistants and provides foundational knowledge and skills. Students receive training in communication and interpersonal skills, infection control, safety/emergency procedures, and promoting residents' independence and respecting patient rights. The PCA works in the hospital setting as a member of the healthcare team under the direction of the nurse. Duties include taking vital signs and assisting patients with basic tasks.

Days	Times	Hours and Costs this term	
Monday - Friday	7:05 am - 1:50 pm	294 hours	\$922

CAREER AND TECHNICAL EDUCATION (CTE) PROGRAMS

Architecture and Construction / 754-321-5167



CARPENTRY

Program Length: 1200 Hours (approximately 12 months full-time)

Program Cost: \$3,975 (approximate tuition & fees)

Program Offered: August & January

Delivery Method: Traditional - 100% classroom based

Train to become a Rough or Finish Carpenter in the rapidly growing Building Construction Industry! Qualified students may receive advanced placement in the Carpentry Apprenticeship program.

Days

Monday - Friday

Times

7:05 a.m. - 1:50 p.m.

Hours and Costs this term

Next Class begins: August 2021



DRAFTING

Program Length: 1500 Hours (approximately 14 months full-time)

Program Cost: \$4,675 (approximate tuition & fees)

Program Offered: August & January

Delivery Method: Traditional - 100% classroom based

Students will focus on the planning, interpreting and preparing of architectural, mechanical, electrical, plumbing, civil, structural, and other 2-D and 3-D technical drawings and sketches using Solidworks, AutoCAD, and Revit.

Days

Monday - Friday

Times

7:05 a.m. - 1:50 p.m.

Hours and Costs this term

Next Class begins: August 2021

There may be additional costs associated with books, uniforms, specific tools, equipment and other related items.

ELECTRICITY

Program Length: 1200 Hours (approximately 12 months full-time)

Program Cost: \$3,855 (approximate tuition & fees)

Program Offered: January & August

Delivery Method: Traditional - 100% classroom based

Train in basic electricity, residential and commercial wiring, and learn to troubleshoot and repair electrical systems. Program content also includes building and wiring codes, including the National Electrical Code. Emphasis is placed on skill development, and much of the program is project based.

Special Note: With additional successful testing, the completion of this program may be used as a substitute for the first year of an Electrical Apprenticeship program.

Days	Times	Hours and Costs this term
Monday - Friday	7:05 a.m. - 1:50 p.m.	<i>Next Class begins: August 2021</i>
Monday - Thursday	6:00 p.m. - 9:45 p.m.	<i>Next Class begins: August 2021</i>

HEATING, VENTILATION, AIR-CONDITIONING/REFRIGERATION (HVAC/R)

Program Length: 1350 Hours (approximately 12 months full-time)

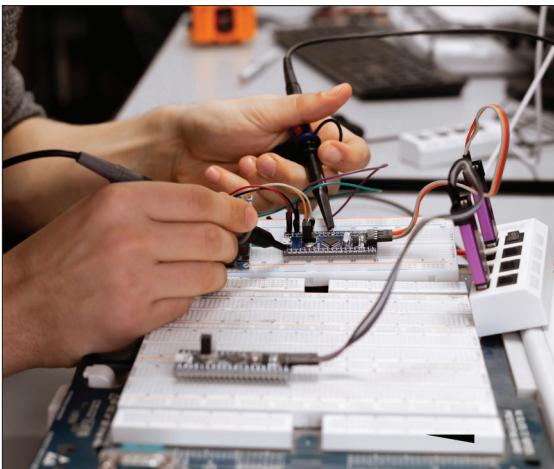
Program Cost: \$4,725 (approximate tuition & fees)

Program Offered: August & January

Delivery Method: Traditional - 100% classroom based

Train to install and maintain residential and commercial HVAC/R systems. Qualified students may receive advanced placement in the HVAC/R Apprenticeship program.

Days	Times	Hours and Costs this term
Monday - Friday	7:05 a.m. - 1:50 p.m.	<i>Next Class begins: August 2021</i>
Monday - Thursday	6:00 p.m. - 9:45 p.m.	<i>Next Class begins: August 2021</i>



Business Management and Administration | 754-321-5188

ACCOUNTING OPERATIONS

Program Length: 900 Hours (approximately 10 months full-time)

Program Cost: \$2,770 (approximate tuition & fees)

Program Offered: August, January & June

Delivery Method: Traditional - 100% classroom based

Distance - 50% or more instruction hours via distance (online)

Students will receive a broad foundation of knowledge and skills expanding the traditional role of the bookkeeper, including double-entry accounting, preparation of financial statements and payroll processing. Students will also learn accounting-specific software, including Excel, Quickbooks and Microsoft Office.

Days	Times	Hours and Costs this term	
Monday - Friday	7:05 a.m. - 1:50 p.m.	252 hours	\$784
Monday - Friday	7:05 a.m. - 10:05 a.m.	126 hours	\$412

Blended Distance: with mandatory on-campus weekly labs.

Distance:	Monday, Wednesday	99 hours	\$332
On-campus Lab:	Tuesday, Thursday 6:30 p.m. - 9:30 p.m.		

100% Distance: with mandatory virtual weekly labs.

Distance:	Monday, Wednesday, Thursday, Friday	126 hours	\$412
Virtual Lab:	Tuesday 5:30 p.m. - 8:30 p.m.		



ADMINISTRATIVE OFFICE SPECIALIST

Program Length: 1050 Hours (approximately 10 months full-time)

Program Cost: \$3,213 (approximate tuition & fees)

Program Offered: August, January & June

Delivery Method: Traditional - 100% classroom based

Distance - 50% or more instruction hours via distance (online)



Students will be prepared for employment as an Administrative Assistant, Administrative Specialist, Front Desk Specialist, and Information Technology Assistant.

Learn Microsoft Office, keyboarding, document processing, bookkeeping fundamentals, and other support skills to become an essential member of any office or business.

Days	Times	Hours and Costs this term	
Monday - Friday	7:05 a.m. - 1:50 p.m.	252 hours	\$784
Monday - Friday	7:05 a.m. - 10:05 a.m.	126 hours	\$412

Blended Distance: with mandatory on-campus weekly labs.

Distance:	Monday, Tuesday, Wednesday, Friday	126 hours	\$412
On-campus Lab:	Thursday 6:00 p.m. - 9:00 p.m.		

100% Distance: with mandatory virtual weekly labs.

Distance:	Monday, Wednesday, Thursday, Friday	126 hours	\$412
Virtual Lab:	Tuesday 5:30 p.m. - 8:30 p.m.		

BUSINESS MANAGEMENT & ANALYSIS

Program Length: 900 Hours (approximately 10 months full-time)

Program Cost: \$2,770 (approximate tuition & fees)

Program Offered: August, January & June

Delivery Method: Traditional - 100% classroom based

Distance - 50% or more instruction hours via distance (online)



The purpose of this program is to prepare students for careers in business management and administration. The content includes communication skills, accounting concepts and practices, business law concepts, leadership skills, business computer applications, business ethics, governmental regulations, human resources and management issues, financial and data analysis, and career development.

Days	Times	Hours and Costs this term	
Monday - Friday	7:05 a.m. - 1:50 p.m.	252 hours	\$784
Monday - Friday	7:05 a.m. - 10:05 a.m.	126 hours	\$412

100% Distance: with mandatory virtual weekly labs.

Distance:	Tuesday, Wednesday, Thursday, Friday		
Virtual Lab:	Monday 5:30 p.m. - 8:30 p.m.	126 hours	\$412

COURT REPORTING - NCRA APPROVED PROGRAM

Program Length: 2850 Hours (approximately 28 months full-time)

Program Cost: \$9,343 (approximate tuition & fees)

Program Offered: August, October, January, March & June

Delivery Method: Traditional - 100% classroom based

Distance - 50% or more instruction hours via distance (online)



Become a Court Reporter writing verbatim testimony for courtroom trials and depositions. This program places strong emphasis on conflict-free theory, realtime writing, and speed development. Students who reach the speed of 200 words per minute participate in an internship that enables the student to sit in on trials and depositions with a working reporter.

Students shall pass three (3), five-minute tests with 95% accuracy at each of the following speeds: 225 wpm testimony (two-voice), 200 wpm jury charge, and 180 wpm literary.

Student shall complete at least 40 verified hours of actual writing time during the internship experience.

Court Reporting Technology:	750 hours (approximately 7 months)
Court Reporting 2:	600 hours (approximately 6 months)
Court Reporting 3:	1500 hours (approximately 15 months)
Totals:	2850 hours 28 months

Days	Times	Hours and Costs this term	
Monday - Friday	8:00 a.m. - 2:30 p.m.	252 hours	\$834

100% Distance: with mandatory virtual weekly labs.

Distance:	Monday, Tuesday, Wednesday, Thursday, Friday	252 hours	\$834
Virtual Lab:	Various options available. Please see counselor.		



CUSTOMER ASSISTANCE TECHNOLOGY

Program Length: 450 hours

Program Cost: \$1,368 (approximate tuition & fees)

Program Offered: August, January & June

Delivery Method: Distance - 50% or more instruction hours via distance (online)

This program focuses on information technology, interpersonal skills, and business communication. Students will gain hands-on experience with essential software applications using Microsoft Office 2016. Students will be qualified for high demand positions across multiple industries and will also have the opportunity to earn an industry credential as a Microsoft Office Specialist and/or CIW Internet Business Associate.

100% Distance: with mandatory virtual meetings

Days	Times	Hours and Costs this term	
Distance:	Monday, Wednesday, Thursday, Friday	126 hours	\$412
Virtual Meeting:	Tuesday	5:30 p.m. - 8:30 p.m.	

LEGAL ADMINISTRATIVE SPECIALIST

Program Length: 1050 Hours (approximately 10 months full-time)

Program Cost: \$3,213 (approximate tuition & fees)

Program Offered: August, January & June

Delivery Method: Traditional - 100% classroom based
Distance - 50% or more instruction hours via distance (online)

Students will be prepared for employment as a Legal Administrative Specialist, Information Technology Assistant, Front Desk Specialist and Administrative Support.

Learn Microsoft Office applications, legal terminology, legal document production, and legal office procedures.

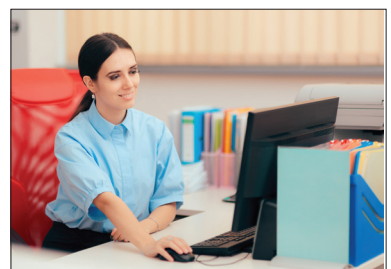
Days	Times	Hours and Costs this term	
Monday - Friday	7:05 a.m. - 1:50 p.m.	252 hours	\$784
Monday - Friday	7:05 a.m. - 10:05 a.m.	126 hours	\$412

Blended Distance: with mandatory on-campus weekly labs.

Distance:	Monday, Tuesday, Wednesday, Friday	126 hours	\$412
On-campus Lab:	Thursday	6:00 p.m. - 9:00 p.m.	

100% Distance: with mandatory virtual weekly labs.

Distance:	Monday, Wednesday, Thursday, Friday	126 hours	\$412
Virtual Lab:	Tuesday	5:30 p.m. - 8:30 p.m.	



MEDICAL ADMINISTRATIVE SPECIALIST

Program Length: 1050 Hours (approximately 10 months - full time)

Program Cost: \$3,213 (approximate tuition & fees)

Program Offered: August, January & June

Delivery Method: Traditional - 100% classroom based
Distance - 50% or more instruction hours via distance (online)

Students will be prepared for employment as medical secretaries, medical office clerks, medical insurance secretaries, medical records clerks, and medical administrative specialists.

Learn medical office procedures, medical insurance, medical terminology, Medisoft and Microsoft Office applications.

Days	Times	Hours and Costs this term	
Monday - Friday	7:05 a.m. - 1:50 p.m.	252 hours	\$784
Monday - Friday	7:05 a.m. - 10:05 a.m.	126 hours	\$412

Blended Distance: with mandatory on-campus weekly labs.

Distance:	Monday, Tuesday, Wednesday, Friday	126 hours	\$412
On-campus Lab:	Thursday 6:00 p.m. - 9:00 p.m.		

100% Distance: with mandatory virtual weekly labs.

Distance:	Monday, Wednesday, Thursday, Friday	126 hours	\$412
Virtual Lab:	Tuesday 5:30 p.m. - 8:30 p.m.		

Lifelong Learning Courses

Business Management and Administration

No Orientation or Basic Skills Test Required

DIGITAL LITERACY AND MICROSOFT OFFICE 2016 FUNDAMENTALS

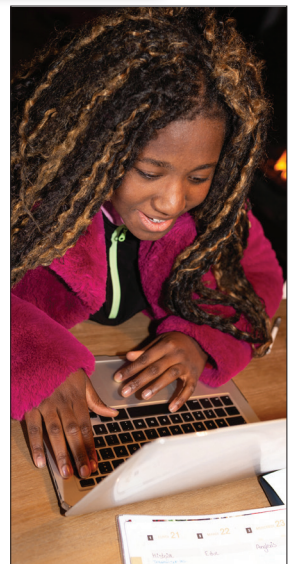
This face-to-face class will help you gain the knowledge and confidence to; use the Windows operating system, navigate the internet safely, manage files and folders on your computer, virtual conference with others, basic email functions and much more. You will also gain experience through hands-on practice to understand the fundamentals of Microsoft 2016: Word, Excel, and PowerPoint.

Saturday	8:00 a.m. - 11:00 a.m.	June - August	24 hours	\$120
----------	------------------------	---------------	----------	-------

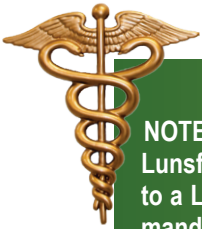
QUICKBOOKS

Fundamental concepts and procedures of Quickbooks for automated bookkeeping. Prerequisite: Bookkeeping fundamentals or experience in the bookkeeping field. Requires basic computer knowledge.

Thursday	6:30 p.m. - 9:30 p.m.	June - August	24 hours	\$120
----------	-----------------------	---------------	----------	-------



Health Science and Practical Nursing | 754-321-5187 | Main Campus 754-322-2818 | Arthur Ashe, Jr. Campus



NOTE: In accordance with requirements set forth by the Joint Commission and the Jessica Lunsford Act, students applying for entrance into any Health Science program must submit to a Level 2 criminal background check and take a drug screening test. This requirement is mandated due to the fact that all Health Science students must participate in a clinical rotation in a healthcare facility as a part of their training. The applicant is responsible for paying for the costs of both tests. The results of these tests may prevent the applicant from either entering or remaining in a Health Science program. Students who are not cleared on their background check or test positive for illegal drugs will not be allowed access to healthcare facilities for clinical externships and therefore will not be able to complete the program. In addition to a background check and drug screening, all students registering for any of the Health Science programs are required to have current immunizations and a yearly physical exam. Prospective students who do not have a valid Social Security Number may encounter difficulties within licensure programs. Please contact the program counselor for specific information. Additionally, all students entering or re-entering the Practical Nursing program must take the Test of Essential Academic Skills (TEAS) and meet minimum requirements.



CENTRAL STERILE PROCESSING TECHNICIAN

Program Length: 650 Hours (approximately 6 months full-time)

Program Cost: \$2,227 (approximate tuition & fees)

Program Offered: August & January

Delivery Method: Traditional - 100% classroom based

Hybrid - Less than 50% of required instructional hours available via distance education (online)



This program is designed to train and prepare students to work as sterile processing or central supply technicians in a hospital or surgical out-patient setting. Students will be taught a variety of skills and competencies to effectively decontaminate, prepare, disinfect and sterilize instrument trays for surgical procedures. Students will also learn the various methods of inventory control and how to manage the storage and distribution of sterile supplies and patient care equipment.

Central Sterile Processing Technicians are an essential part of the healthcare team and serve as key individuals in preventing infections and the spread of disease in hospitals and surgical centers. A clinical externship is included in the program.

Days

Monday - Friday

Times

7:30 a.m. - 2:15 p.m.

Hours and Costs this term

Next Class begins: August 2021

DENTAL ASSISTING TECHNOLOGY & MANAGEMENT

APPLIED TECHNOLOGY DIPLOMA - ATD

Program Length: 1230 Hours (approximately 12 months full-time)

Program Cost: \$4,302 (approximate tuition & fees)

Program Offered: January

Delivery Method: Traditional - 100% classroom based

Students will be taught the basic knowledge and skills to offer direct chairside assistance to the dentist, expose dental radiographs, and educate and instruct patients in preventive dental care. Students will be trained in infection control procedures, disease prevention, dental procedures and instruments and business office procedures. Upon successful completion of the program and in accordance with state guidelines, students are issued an Applied Technology Diploma (ATD) in Dental Assisting Technology and Management with Expanded Duties and Dental Radiography.

Days	Times	Hours and Costs this term
Monday - Friday	7:05 a.m. - 1:50 p.m.	<i>Next Class begins: January 2022</i>

Note: High School or High School Equivalency Diploma required.

The program in dental assisting is accredited by the Commission on Dental Accreditation (CODA). The Commission is a specialized accrediting body recognized by the United States Department of Education.

Commission on Dental Accreditation (CODA)

211 East Chicago Avenue • Chicago, IL 60611

312-440-4653 • www.ada.org/en/coda



ELECTROCARDIOGRAPH TECHNOLOGY

Program Length: 465 Hours (approximately 4 months full-time)

Program Cost: \$1,662 (approximate tuition & fees)

Program Offered: August

Delivery Method: Traditional - 100% classroom based

Hybrid - less than 50% of required instructional hours available via distance education (online)

Train to become an EKG/Cardiovascular Technician and work in a variety of healthcare facilities including hospitals, nursing homes, clinics and physicians offices. Students learn how to perform a 12-lead EKG, properly maintain diagnostic equipment, recognize normal and abnormal sinus rhythms and monitor patients for cardiovascular disorders.

Days	Times	Hours and Costs this term
Monday - Friday	7:05 a.m. - 1:50 p.m.	<i>Next Class begins: August 2021</i>

HEMODIALYSIS TECHNICIAN

Program Length: 600 Hours (approximately 6 months full-time)

Program Cost: \$2,074 (approximate tuition & fees)

Program Offered: August & January

Delivery Method: Traditional - 100% classroom based

Hybrid - less than 50% of required instructional hours available via distance education (online)

Students are taught the skills necessary for employment as hemodialysis technicians or dialysis technicians. Hemodialysis technicians have been members of the dialysis team since the beginning of the dialysis program. They usually serve in two (2) capacities; one involves the assembly and maintenance of the dialysis equipment and the other focuses on patient care. Often the hemodialysis technician duties will combine both the patient care and equipment care responsibilities. The technician works with all members of the dialysis team but is most closely aligned with a nurse who delegates and supervises patient care.

Days

Monday - Friday

Times

7:30 a.m. - 2:15 p.m.

Hours and Costs this term

Next Class begins: August 2021

Note: High School or High School Equivalency Diploma required for clinicals.



MEDICAL ASSISTING

Program Length: 1300 Hours (approximately 12 months full-time)

Program Cost: \$4,399 (approximate tuition & fees)

Program Offered: January

Delivery Method: Traditional - 100% classroom based

Hybrid - less than 50% of required instructional hours available via distance education (online)

Students are taught the skills and techniques necessary to become a Medical Assistant and obtain employment in a variety of healthcare facilities. This multi-skilled health professional is trained in clerical and medical office procedures, phlebotomy, EKG, X-Ray, basic patient care techniques and laboratory procedures. Medical assistants perform routine administrative and clinical tasks to keep the offices and clinics of physicians, podiatrists, chiropractors and optometrists running smoothly. They are involved in direct patient care and assist the physician or other health professional during examinations.

Days

Monday - Friday

Times

7:05 a.m. - 1:50 p.m.

Hours and Costs this term

Next Class begins: January 2022



Tuition is based on Florida residency. Non-resident tuition is higher.

MEDICAL CODER/BILLER**APPLIED TECHNOLOGY DIPLOMA - ATD****Program Length:** 1110 Hours (approximately 10 months full-time)**Program Cost:** \$3,558 (approximate tuition & fees)**Program Offered:** August**Delivery Method:** Traditional - 100% classroom based

The Medical Coder/Biller program is a comprehensive program that prepares students for employment as entry-level coder/billers.

The main role of a medical coder/biller is to review patient medical records and assign codes to diagnoses and procedures performed by healthcare providers. The treating medical facility can bill insurance for reimbursement based on these codes. The medical coder/biller is responsible for the accurate flow of medical information and patient data between physicians, patients and third-party payers. Most medical coder/billers work on-site in hospitals, clinics, physician offices and for insurance companies.

With the introduction of the electronic health records (EHR), experienced medical coders may have the opportunity to work from home.

Days	Times	Hours and Costs this term
Monday - Friday	7:30 a.m. - 2:15 p.m.	<i>Next Class begins: August 2021</i>

Note: High School or High School Equivalency Diploma required.

**MENTAL HEALTH TECHNICIAN****Program Length:** 480 Hours (approximately 5 months full-time)**Program Cost:** \$1,684 (approximate tuition & fees)**Program Offered:** August**Delivery Method:** Traditional - 100% classroom based

Hybrid - less than 50% of required instructional hours available via distance education (online)

Students will be trained for employment as Mental Health Technicians, Psychiatric Aides or Technicians and Nursing Assistants. Mental Health Technicians work in a variety of healthcare facilities under the supervision of a psychiatrist, registered nurse, counselor or social worker and participate in the development and implementation of therapeutic treatment plans for patients with mental health issues. Students will receive training in physical assessment, psychiatric and substance abuse disorders, developmental disabilities, health/wellness education, crisis intervention and basic nursing assistant skills. Upon successful completion of the program, students will have the opportunity to take the Certified Nursing Assistant examination given by the Florida Board of Nursing.

Days	Times	Hours and Costs this term
Monday - Friday	7:05 a.m. - 1:50 p.m.	<i>Next Class begins: August 2021</i>

ORTHOPEDIC TECHNOLOGY

Program Length: 800 Hours (approximately 8 months full-time)

Program Cost: \$2,864 (approximate tuition & fees)

Program Offered: January

Delivery Method: Traditional - 100% classroom based

Hybrid - less than 50% of required instructional hours available via distance education (online)

Students will be taught the skills and techniques necessary to be employed working with orthopedic physicians to treat patients in a variety of health care settings. The program provides the skills and knowledge needed to become a competent orthopedic technologist performing the following services: routine office and departmental procedures; applying, adjusting and removing casts, splints, and braces; setting up, adjusting, and maintaining traction configurations; assisting with the care of acutely injured patients; and assisting the physician in the reduction and/or manipulation of orthopedic injuries. Graduates may be employed in hospitals, clinics, and private practice offices.

Days

Times

Hours and Costs this term

Monday - Friday

7:05 a.m. - 1:50 p.m.

Next Class begins: January 2022

PATIENT CARE TECHNICIAN

Program Length: 600 Hours (approximately 6 months full-time)

Program Cost: \$2,044 (approximate tuition & fees)

Program Offered: January

Delivery Method: Traditional - 100% classroom based

The Patient Care Technician is a multi-skilled healthcare worker who, under the direction and supervision of a Registered Nurse, carries out the essential basic bedside patient care functions. Students also receive supplementary training in 12-lead EKG, basic phlebotomy techniques and restorative skills. Upon successful completion of the program, students will have the opportunity to take the Certified Nursing Assistant examination given by the Florida Board of Nursing. This is an excellent course for students who have no previous medical experience and who wish to enter the healthcare field.

Days

Times

Hours and Costs this term

Monday - Friday

7:05 a.m. - 1:50 p.m.

Next Class begins: January 2022



PHARMACY TECHNICIAN**APPLIED TECHNOLOGY DIPLOMA - ATD****Program Length:** 1050 Hours (approximately 10 months full-time)**Program Cost:** \$3,487 (approximate tuition & fees)**Program Offered:** January**Delivery Method:** Traditional - 100% classroom based

Hybrid - less than 50% of required instructional hours available via distance education (online)



Pharmacy Technician is a PTCB-Recognized Education/Training Program

Pharmacy Technicians generally work under the supervision of a registered pharmacist and perform tasks related to receiving, dispensing, distribution, control, maintenance, compounding, manufacturing, packaging and labeling of pharmaceutical products. Currently, pharmacy technicians are responsible for routine tasks previously performed by pharmacists and for mastering new pharmacy technology as it becomes available.

Days	Times	Hours and Costs this term
Monday - Friday	7:05 a.m. - 1:50 p.m.	Next Class begins: January 2022

Note: High School or High School Equivalency required.**PRACTICAL NURSING (Arthur Ashe, Jr. Campus)****Program Length:** 1350 Hours (approximately 12 months full-time)**Program Cost:** \$4,557 (approximate tuition & fees)**Program Offered:** July, September, December, March & June**Delivery Method:** Traditional - 100% classroom based

The Practical Nursing program prepares an individual to participate in the planning, implementation, and evaluation of nursing care in hospitals and extended care facilities. Students are introduced to the clinical area early in the program. Theory and clinical procedures are integrated to reinforce learning. Licensed graduates may advance into Broward College's Registered Nurse program (LPN/RN).

Basic skills and ATI TEAS® scores must be met prior to enrollment.

Days	Times	Hours and Costs this term
Monday - Friday	7:00 a.m. - 1:45 p.m.	282 hours \$915

Note: High School or High School Equivalency Diploma required

The Practical Nursing program is accredited by:
 Accreditation Commission for Education in Nursing, Inc.
 3390 Peachtree Rd. NE, Suite 1400 | Atlanta GA 30326
 P: 404-975-5000 | Fax: 404-975-5020
<http://www.acenursing.org>



Program Approved By: Florida Board of Nursing
<https://floridasnursing.gov/>

Curriculum approved by: Florida Department of Education
<http://www.fldoe.org/>



There may be additional costs associated with books, uniforms, specific tools, equipment and other related items.

PRACTICAL NURSING - cont'd

Additional Fees associated with program attendance:

- Physical exam - annual fee varies by provider
- Tuberculin (PPD) 2-Step (X2) or Chest X-Ray -annual fee varies by provider
- Drug Testing (Authorized Lab Only) \$38
- Level 2 Background Check (Approved Vendor Only) \$45
- Compliance Tracking Subscription (Approved Vendor Only) \$18
- ATI TEAS Testing Fee \$68

Fees associated with licensure:

- \$110 Application & Licensing fee to Board of Nursing
- \$200 to Pearson VUE, Testing Vendor
- Fee varies for LiveScan Services Provider

State License: Licensed Practical Nursing

Program Courses:

- PRN0098 Practical Nursing Foundations 1 - 300 hrs.
- PRN0099 Practical Nursing Foundation 2 - 300 hrs.
- PRN0290 Medical Surgical Nursing 1 - 300 hrs.
- PRN0291 Medical Surgical Nursing 2 - 300 hrs.
- PRN 0690 Comprehensive Nursing & Transcription Skills - 150 hrs.

Hospitality and Tourism | 754-321-5188

PROFESSIONAL CULINARY ARTS AND HOSPITALITY

Program Length: 1200 Hours (approximately 12 months full-time)

Program Cost: \$3,795 (approximate tuition & fees)

Program Offered: August, October, January & March

Delivery Method: Traditional - 100% classroom based

The program is designed to develop the individual interested in a career in the food service industry. Students will be taught through hands-on experiences in setting-up banquets and food preparation, including meat and poultry fabrication, soups, stocks & sauces, hors d'oeuvres, smoking meats, charcuterie, along with baking and pastry basics; breads, creams, custards, cakes, pies and cookies.

We are a fast-paced environment which will prepare the student to be successful within real-life hospitality careers. In addition, our students will learn the critical importance of food safety and sanitation by attaining their ServSafe Food Safety Manager certification. Students are also trained in food service management and learn the importance of healthy cooking and nutrition.

Days

Monday - Friday

Times

7:05 a.m. - 2:35 p.m.

Hours and Costs this term

Next Class begins: August 2021



American Culinary Federation
Education Foundation

This program is accredited by the Accrediting
Commission of the American Culinary
Federation Education Foundation (ACFEF)

Tuition is based on Florida residency. Non-resident tuition is higher.

Information Technology | 754-321-5266

APPLIED INFORMATION TECHNOLOGY

Program Length: 600 Hours (approximately 6 months full-time)

Program Cost: \$1,875 (approximate tuition & fees)

Program Offered: August, January & June

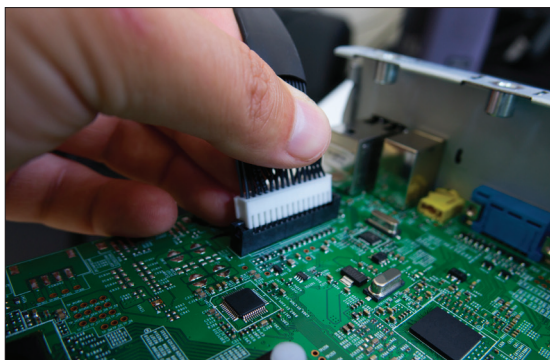
Delivery Method: Distance - 50% or more instructional hours via distance education (online).

This program prepares students for a variety of careers in the Applied Information Technology area. The content includes, but is not limited to, computer application skills including computer hardware, software applications, systems support and maintenance, and network concepts.

After successfully completing this program the student will be able to perform computer support services tasks and be prepared to enter a specialized Information Technology career cluster program at an advanced, accelerated level.

Blended Distance: with mandatory on-campus labs and finals.

Days	Times	Hours and Costs this term	
Distance:	Monday, Tuesday, Wednesday, Friday	336 hours	\$1,068
On-campus Lab:	Thursday 5:30 p.m. - 8:30 p.m.		



DATABASE APPLICATION DEVELOPMENT AND PROGRAMMING

Program Length: 1200 Hours (approximately 12 months full-time)

Program Cost: \$3,615 (approximate tuition & fees)

Program Offered: August, January & June

Delivery Method: Traditional - 100% classroom based

Distance - 50% or more instruction hours via distance (online)

An approved



Learn database design, ANSI JavaScript, Logic, PL/SQL, Python, and SQL for employment as computer programmer assistants, computer programmers, and database programmers.

Days	Times	Hours and Costs this term	
Monday - Friday	7:05 a.m. - 1:50 p.m.	252 hours	\$771
Monday - Friday	7:05 a.m. - 10:05 a.m.	126 hours	\$406

100% Distance: with mandatory weekly virtual labs and finals.

Distance:	Monday, Tuesday, Wednesday, Friday	126 hours	\$406
Virtual Lab:	Thursday 5:30 p.m. - 8:30 p.m.		

There may be additional costs associated with books, uniforms, specific tools, equipment and other related items.

NETWORK SUPPORT SERVICES

Program Length: 1050 Hours (approximately 10 months full-time)

Program Cost: \$3,318 (approximate tuition & fees)

Program Offered: August, January & June

Delivery Method: Traditional - 100% classroom based

Distance - 50% or more instruction hours via distance (online)



The Network Support Services program prepares students for employment in network administration as network support specialists. The program prepares students to create, monitor, and maintain computer networks and operate computers and peripheral equipment. Earn your Industry Certifications and develop hands-on skills to give you a competitive edge in the Information Technology field. (An approved CISCO Academy.)

Days	Times	Hours and Costs this term	
Monday - Friday	7:05 a.m. - 1:50 p.m.	252 hours	\$809
Monday - Friday	7:05 a.m. - 10:05 a.m.	126 hours	\$425

Blended Distance: with mandatory on-campus labs and finals.

Distance:	Monday, Tuesday, Wednesday, Friday	126 hours	\$425
On-campus Lab:	Thursday	5:30 p.m. - 8:30 p.m.	



WEB DEVELOPMENT

Program Length: 1050 Hours (approximately 10 months full-time)

Program Cost: \$3,213 (approximate tuition & fees)

Program Offered: August, January & June

Delivery Method: Traditional - 100% classroom based

Distance - 50% or more instruction hours via distance (online)

Gain the technical knowledge and skills needed to prepare for careers such as Information Technology Assistant, Coder, Assistant Web Designer, and Web Designer. Prepare to design, code, and publish websites for mobile technology, tablets, and desktop formats. The content includes web and interface design, scripting, media integration, and digital marketing techniques.

Days	Times	Hours and Costs this term	
Monday - Friday	7:05 a.m. - 1:50 p.m.	252 hours	\$784
Monday - Friday	7:05 a.m. - 10:05 a.m.	126 hours	\$412

100% Distance: with mandatory weekly virtual labs and finals.

Distance:	Monday, Tuesday, Wednesday, Friday	126 hours	\$412
Virtual Lab:	Thursday	5:30 p.m. - 8:30 p.m.	

Manufacturing I 754-321-5167



MACHINING TECHNOLOGIES

Program Length: 1500 Hours (approximately 14 months full-time)

Program Cost: \$4,750 (approximate tuition & fees)

Program Offered: August

Delivery Method: Traditional - 100% classroom based

Train to set and operate machines used to make precision manufactured parts. Students complete classroom and lab projects with Computerized Numerical Control (CNC) machinery and learn Computer Aided Design/Computer Aided Manufacturing (CAD/CAM) processes.

Days	Times	Hours and Costs this term
Monday - Friday	7:05 a.m. - 1:50 p.m.	<i>Next Class begins: August 2021</i>

WELDING TECHNOLOGY

Program Length: 1050 Hours (approximately 11 months full-time)

Program Cost: \$3,843 (approximate tuition & fees)

Program Offered: August & January

Delivery Method: Traditional - 100% classroom based

Students will work in a specialized classroom and practical lab learning how to cut and join metal parts through the application of arc welding. Instruction includes, selection of proper torch tips; adjustment of gas pressure and flame according to the size and characteristics of metal; selection of proper electrodes; adjustment of voltage and current for the type of metal; flame cutting; and use of equipment introducing shield of inert gas (MIG-TIG & FCAWP) around the electric arc to prevent oxidation. Instruction also involves classroom and practical experiences to teach students to fabricate and weld joints and perform fabrication in other areas of welding. Related instruction in blueprint reading and layout is included as an integral part of the program.

Days	Times	Hours and Costs this term
Monday - Friday	7:05 a.m. - 1:50 p.m.	<i>Next Class begins: August 2021</i>



There may be additional costs associated with books, uniforms, specific tools, equipment and other related items.

Transportation, Distribution and Logistics | 754-321-5266

AUTOMOTIVE PROGRAMS PREPARE STUDENTS TO TAKE ASE CERTIFICATION EXAMS



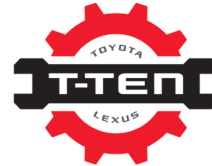
ADVANCED AUTOMOTIVE SERVICE TECHNOLOGY - TOYOTA T-TEN (Technician Training & Education Network)

Program Length: 2400 Hours (24 months full-time)

Program Cost: \$8,175 (approximate tuition & fees)

Program Offered: August

Delivery Method: Traditional - 100% classroom based



This program is an ASE Education Foundation Certified Master Technician Training Program. Train with Toyota/Lexus products using advanced automotive theory and practical classroom applications. Students are trained in areas required for professional technicians to maintain and repair automotive vehicles. Students participate in direct dealership experiences working with qualified Toyota/Lexus technicians.

Days

Monday - Friday

Times

7:05 a.m. - 2:20 p.m.

Hours and Costs this term

Next Class begins: August 2021

Note: High School or High School Equivalency Diploma required. Basic skills scores must be met prior to enrollment.



AUTOMOTIVE COLLISION TECHNOLOGY TECHNICIAN

Program Length: 1400 Hours (approximately 14 months full-time)

Program Cost: \$4,795 (approximate tuition & fees)

Program Offered: August & January

Delivery Method: Traditional - 100% classroom based

This program is an ASE Education Foundation Certified Collision Repair and Refinishing Master Technician Training Program specializing in classroom and laboratory experiences concerned with all phases of the repair of damaged vehicle bodies and fenders. Train in all five (5) ASE areas required for professional technicians.

Days

Monday - Friday

Times

7:05 a.m. - 1:50 p.m.

Hours and Costs this term

Next Class begins: August 2021



AUTOMOTIVE SERVICE TECHNOLOGY

Program Length: 1800 Hours (approximately 18 months full-time)

Program Cost: \$6,135 (approximate tuition & fees)

Program Offered: August, March & January

Delivery Method: Traditional - 100% classroom based

This program is an ASE Education Foundation Certified Master Technician Training Program that meets national standards. Train in all eight (8) ASE areas required for professional technicians who maintain and repair automotive vehicles.

Days	Times	Hours and Costs this term
Monday - Friday	7:05 a.m. - 1:50 p.m.	Next Class begins: August 2021



AVIONICS SYSTEMS TECHNICIAN

Program Length: 1200 Hours (approximately 12 months full-time)

Program Cost: \$3,795 (approximate tuition & fees)

Program Offered: January

Delivery Method: Traditional - 100% classroom based

Avionics Systems Technicians are specialists who repair and maintain a plane's electronic instruments, such as radio communication devices and equipment, radar systems, and navigation aids. Avionics is a specialization within electronic maintenance and repair. It focuses on aircraft electronics, but encompasses a wide range of job types. An avionics technician is a specialist who is responsible for all the electronics aboard an aircraft as well as the wiring that connects to the electrical system. They run cables, mount antennas, and connect instruments for navigation and engine monitoring. Avionics technicians install radios, autopilots, and passenger entertainment systems. The job demands attention to detail and a commitment to the very highest standards of quality workmanship.

Avionics Systems Technicians:

- test electronic instruments, using circuit testers, oscilloscopes, and voltmeters.
- interpret flight test data to diagnose malfunctions and performance problems.
- assemble components, such as electrical controls and junction boxes, and install software.
- install instrument panels, using hand tools, power tools, and soldering irons.
- repair or replace malfunctioning components.
- keep accurate records of maintenance and repair work.

Days	Times	Hours and Costs this term
Monday - Friday	7:05 a.m. - 1:50 p.m.	Next Class begins: January 2022

APPRENTICESHIP | 754-321-5261

Note: The Council on Occupational Education (COE) does not accredit avocational programs such as ESOL, ABE, GED® Test Preparation, AAAE or Apprenticeship. In addition, these programs do not qualify for Title IV financial aid assistance.

Apprenticeship is a method of training individuals, in a trade, using a combination of on-the-job skills development and classroom/lab related instruction. Atlantic Technical College serves as the Apprenticeship Local Educational Agency (LEA) for Broward County Public Schools and coordinates the largest number of apprenticeship training programs in Florida, operating in accordance with federal and state laws and rules.

Apprenticeship training offers the individual a chance to “earn while you learn.” In addition to a paid 40-hour on-the-job training work week under the supervision of a journeyperson, apprentices are required to attend related training on selected evenings and/or weekends. Wages increase as the apprentice raises their skill level through training and work experience. Apprenticeship training programs vary in length, depending on the trade and can take from two (2) to five (5) years to complete. There are both union and non-union programs.

Apprenticeship training programs include:

- Carpentry (Form Builder Carpenter)
- Cement Mason (Bricklayer)
- Electrician
- Elevator Constructor/Mechanic
- Glazing (Glaziers)
- Heating & AC Installer/Service
- Industrial Pipefitter (Sprinkler Fitter/Pipefitter)
- Line Erector (Lineman)
- Machining (Machinist)
- Maintenance Repair, Building (Step-Up)
- Operating Engineer
- Painting and Decorating (Painter)
- Plumbing Technology (Plumber & Pipefitter)
- Roofing
- Sheetmetal
- Structural Steel Work (Ironworker)
- Yacht Service Technician



CERTIFICATION/LICENSURE EXAMS

Industry credentials improve your chances for employment!

Students will be prepared to take an approved State and/or nationally recognized industry certification or licensure exam in their field of study (conditions apply). Students who take and pass their exam(s) may be eligible to receive reimbursement for the cost of their exam(s). See your Certified School Counselor/Advisor for details. Below is a partial list of certifications available to ATC students. Please be advised that this list is subject to change.

- Adobe Certified Associate (ACA):
Flash, Photoshop Creative Cloud,
Dreamweaver, Illustrator
InDesign, Premiere Pro
- Aerospace/Aircraft Assembly (AAA)
- Aircraft Electronic Technician (AET)
- Associate Certified Electronics Technician (CETa)
- Automotive Service Excellence (ASE)
(Individual Certified ASE Exams through Master Tech)
- Avionics Electronics Technician
- Certified Clinical Hemodialysis Technician (CCHT)
- Certified Clinical Medical Assistant (CCMA)
- Certified Coding Associate (CCA)
- Certified Coding Specialist (CCS)
- Certified Dental Assistant (CDA)
- Certified Drafter – Architecture (ADDA)
- Certified EKG Technician (CET)
- Certified Food Protection Manager (ServSafe®)
- Certified Internet Web (CIW)
Java Script Specialist
- Certified Medical Administrative Assistant (CMAA)
- Certified Nursing Assistant (CNA)
- Certified Pharmacy Technician (CPhT)
- Certified Registered Central Service Technician (CRCST)
- Certified Solidworks Associate-Academic (CSWA)
- Certified Solidworks Professional - Academic (CSWP)
- CompTIA (Computer Technology Industry Association)
A+, Network+, Security+
- Florida Expanded Duties and Dental Radiography
- ESCO HVAC Excellence Employment Ready (ER):
EPA Section 608 Universal, R-410A, Air
Conditioning, Electric Heat, Electrical, Gas Heat,
Heat Pump, Light Commercial Air Conditioning,
Light Commercial Refrigeration
- Licensed Practical Nurse (LPN) (NCLEX)
- MasterCam Associate Certification
Mill Design & Tool Paths
- Microsoft Office Specialist (MOS)
- Microsoft Office Master
- Microsoft Technology Associate (MTA)
(IT Infrastructure & Database)
- NCCER:
Core
Carpentry I & 2
- NIMS: CNC Mill Operations
- Orthopaedic Technologist Certified (OTC)
- OSHA 10 Hour Safety Course
- Quickbooks Certified User
- Welder
3G, 4G FCAW
3G, 4G SMAW



Atlantic Technical College is a Pearson VUE and Certipoint Authorized Testing Center. Pearson VUE and Certipoint offer innovative computer-based testing solutions through secure electronic test delivery.



ATLANTIC TECHNICAL COLLEGE

2020 - 2021 CALENDARS

Career & Technical Education (CTE) Program Enrollment Calendar

	SUMMER 2021	FALL 2021-2022		WINTER 2021-2022	
	Term 5 (42 Days)	Term 1 (42 Days)	Term 2 (42 Days)	Term 3 (45 Days)	Term 4 (51 Days)
Re-Registration (current students):	May 17	July 28	N/A	December 8	N/A
Open Registration (new students)	Ongoing	Ongoing	Ongoing	Ongoing	Ongoing
Term Begins:	June 11	August 18	October 21	January 12	March 29
Early Release Days		October 19	January 10	February 14 March 17	April 14 June 9
Holiday/School Closed	July 3–5	September 4–7 September 16	November 11 November 20–28 December 18–January 2	January 15–17 February 19–21 March 19 - 27	April 15–17 May 28–30
No Classes: Planning Days		October 20	January 11	March 18	June 10
Last Day of Term (Daytime)	August 10	October 19	January 10	March 17	June 9
Last Day of Term (Evening)	August 10	October 19	January 10	March 17	June 9

Pre-College Programs Enrollment Calendar

	Tri C 2021 (75 Days)	Tri A 2021 - 2022 (78 Days)	Tri B 2021 - 2022 (69 Days)
Re-Registration (current students):	April 5	July 28 ()	November 30
Open Registration (new students)	Ongoing	Ongoing	Ongoing
Trimester Begins	April 26	August 18	January 3
Early Release Days	June 9	October 19	January 10 February 14 March 17 April 14
Holiday/School Closed	May 29 – 31 July 3 – 5	September 4 – 7 September 16 November 11 November 20 – 28	December 18 – January 2 January 15 – 17 February 19 – 21 March 19 – 27 April 15 - 17
No Classes: Planning Day	June 10	October 20	January 11 March 18 March 28
Last Day of Trimester (Daytime)	August 10	December 17	April 22
Last Day of Trimester (Evening)	August 10	December 16	April 21

Atlantic Technical College and Technical High School

www.atlanticttechnicalcollege.edu

Robert B. Crawford, Director

Brian Bush, Assistant Director

John M. Felser, Assistant Director

Tonya S. Hefley, Assistant Director

Vicky LaPorte, Assistant Director

Dr. Wesley M. Mabin, Jr., Assistant Director

Andre L. Newton, Assistant Director

Neeta E. Rancourt, Assistant Director



Main Campus - Coconut Creek
4700 Coconut Creek Parkway
Coconut Creek, FL 33063
754-321-5100

Arthur Ashe, Jr. Campus
1701 NW 23rd Avenue
Fort Lauderdale, FL 33311
754-322-2800

ESOL Campus @ Coconut Creek HS
1400 NW 44th Avenue
Coconut Creek, FL 33066
754-321-5350

Stay Connected



www.CareerinayearFL.com



The School Board of Broward County, FL

Dr. Rosalind Osgood, Chair
Laurie Rich Levinson, Vice Chair
Lori Alhadeff / Patricia Good
Debra Hixon / Donna P. Korn
Sarah Leonardi / Ann Murray
Nora Rupert

Robert W. Runcie
Superintendent of Schools

www.browardschools.com

The School Board of Broward County, Florida, prohibits any policy or procedure which results in discrimination on the basis of age, color, disability, gender identity, gender expression, genetic information, marital status, national origin, race, religion, sex or sexual orientation. The School Board also provides equal access to the Boy Scouts and other designated youth groups. Individuals who wish to file a discrimination and/or harassment complaint may call the Director, Equal Education Opportunities/ADA Compliance Department & District's Equity Coordinator/Title IX Coordinator at 754-321-2150 or Teletype Machine (TTY) 754-321-2158. Individuals with disabilities requesting accommodations under the Americans with Disabilities Act Amendments Act of 2008, (ADAAA) may call Equal Educational Opportunities/ADA Compliance Department at 754-321-2150 or Teletype Machine (TTY) 754-321-2158.

