

# ***Atlantic Technical College and Technical High School***



## **Winter Schedule 2021**

***Atlantic Technical College and Technical High School, while still offering programs via an online platform (e-Learning), has initiated a phased in re-opening of our campuses. Once a complete re-opening occurs, programs will follow the delivery method(s) indicated in this schedule.***

***What you do today  
creates a better tomorrow!***

**3 Broward Locations:**

**Main Campus - Coconut Creek**

**Arthur Ashe, Jr. Campus**

**ESOL Campus @ Coconut Creek HS**



**GET THERE**  
with Atlantic Technical College



[www.CareerinyearFL.com](http://www.CareerinyearFL.com)

**Stay Connected**



Robert B. Crawford, Director  
All Campuses



[www.atlantictechnicalcollege.edu](http://www.atlantictechnicalcollege.edu)



## ATLANTIC TECHNICAL COLLEGE AND TECHNICAL HIGH SCHOOL

### MAIN CAMPUS

Assistant Directors:

Brian Bush | John M. Felser  
Tonya S. Hefley | Vicky LaPorte  
Dr. Wesley M. Mabin, Jr.  
Neeta E. Rancourt

4700 Coconut Creek Parkway  
Coconut Creek, Florida 33063  
Tel: 754-321-5100 | Fax: 754-321-5380

### ARTHUR ASHE, JR. CAMPUS

Andre L. Newton, Assistant Director

1701 Northwest 23rd Avenue  
Fort Lauderdale, Florida 33311  
Tel: 754-322-2800 | Fax: 754-322-2880

### ESOL CAMPUS @ COCONUT CREEK HS

Brian Bush, Assistant Director

1400 Northwest 44th Avenue  
Coconut Creek, Florida 33066  
Tel: 754-321-5350

Alicia Grigull, Director  
Office of Student Affairs  
All Campuses

## REGISTRATION: CAREER and TECHNICAL EDUCATION (CTE)

Re-Registration For Current CTE Students

Begins: **NOVEMBER 16, 2020**

Registration For New CTE Students

Begins: **ONGOING**

CTE Winter Term Begins: **JANUARY 11, 2021**

CTE Winter Term Ends: **JUNE 9, 2021**

## SCHOOL HOURS OF OPERATION: MAIN CAMPUS

Monday - Thursday	7:00 a.m. - 10:00 p.m.
Friday	7:00 a.m. - 4:00 p.m.
**Saturday	7:00 a.m. - 12:00 p.m.

### ARTHUR ASHE, JR. CAMPUS

Monday - Friday	8:00 a.m. - 4:00 p.m.
-----------------	-----------------------

### ESOL CAMPUS @ COCONUT CREEK HS

Monday - Friday	8:00 a.m. - 4:00 p.m.
-----------------	-----------------------

\*\*Anticipated Opening - January 23, 2021

2020 - 2021 School Calendars  
see page 34

## Accredited/Approved by:

Commission of the Council on Occupational Education (COE)  
7840 Roswell Road, Bldg. 300, Ste. 325, Atlanta, GA 30350  
800-917-2081 • FAX 770-396-3790 • www.council.org

Cognia™ (formerly AdvancED)  
9115 Westside Parkway, Alpharetta, GA 30009  
888-413-3669 • www.cognia.org

Accreditation Commission for Education in Nursing (ACEN)  
3390 Peachtree Rd., NE • Ste. 1400 • Atlanta, GA 30326  
404-975-5000 • Fax: 404-975-5020 • www.acenursing.org

Commission on Dental Accreditation (CODA)  
211 East Chicago Avenue • Chicago, IL 60611  
312-440-4653 • www.ada.org/en/coda

American Culinary Federation Education Foundation (ACFEF)

ASE Education Foundation

Florida Board of Nursing

Florida Department of Education (FLDOE)

National Court Reporters Association (NCRA)

National Restaurant Association Educational Foundation (NRAEF)

Pharmacy Technician Certification Board (PTCB)

State Approving Agency for Veterans' Education and Training  
Florida Department of Veterans' Affairs



### Certification Reimbursement Plan

Pass a State approved industry certification exam aligned to your program of study and we will help you pay for it. See your program counselor/advisor for details and conditions.

### College Credit Eligibility

In many programs, students who have met all eligibility requirements to become a program graduate may also be awarded college credits from Broward College and other Florida state colleges/community colleges toward an Associate Degree. Students must enroll within two (2) years of completing their program at Atlantic Technical College. See your program counselor/advisor for details and conditions.

### Guarantee for Success

Atlantic Technical College and Technical High School (ATC) is committed to teaching the skills you need for the career you desire. We are proud to stand behind our graduates and the education they receive. To demonstrate our support, we offer the Guarantee for Success Plan. If a graduate of ATC does not pass the identified, entry-level, industry certification test in his or her field of study, the student is invited to return for additional training and/or test preparation at no additional cost. See your program counselor/advisor for details and conditions.

# BE SAFE. STAY SAFE.

THE FOLLOWING PRECAUTIONARY MEASURES HAVE BEEN PUT IN PLACE



**FACILITIES CLEAN TEAM IS ON SITE**



**MANDATORY MASKS**



**PRACTICE SOCIAL DISTANCING**



**ELECTRONIC SANITATION SYSTEM**



**HAND SANITIZING STATIONS THROUGHOUT THE CAMPUS**



## ***TO GET STARTED IN A CAREER/TECHNICAL PROGRAM***

### **STEP 1**

#### ***ATTEND A PROGRAM SPECIFIC ORIENTATION***

Program orientations are currently being conducted online via counselor/advisor led video conferencing. The purpose of orientation is to introduce prospective students to the technical programs, the admissions process, support services and school policies/procedures.

Please sign-up for Orientation by following these three (3) simple steps:

Step 1: Go to [www.AtlanticTechnicalCollege.edu/getting-started](http://www.AtlanticTechnicalCollege.edu/getting-started).

Step 2: Click on the program you are interested in.

Step 3: Select your day and sign-up!

### **STEP 2**

#### ***COMPLETE AN APPLICATION***

After completing the online orientation, prospective students will contact their program counselor for a digital application.

Orientation is not offered on Fridays, Holidays or "days off" that are approved by the School Board of Broward County, Florida.



**STEP 3****APPLY FOR FINANCIAL AID (OPTIONAL)**

Prospective students requesting financial assistance must complete the online Free Application for Federal Student Aid (FAFSA) as soon as possible. This step is optional. If you do not require financial assistance, proceed to step 4. This step can be completed simultaneously with the admissions process.

**Financial Aid advisement is only available on the Main Campus by appointment.  
Monday - Friday 8:30 a.m. to 4:00 p.m.**

**STEP 4****REQUEST DISABILITY SERVICES (OPTIONAL)**

Prospective students who wish to self-identify as having a documented disability may request reasonable accommodations for testing and classroom instruction. This step is optional. If you do not require disability services, proceed to step 5.

**STEP 5****COMPLETE REGISTRATION PACKET FORMS**

All forms are required and fillable within your Focus Portal. You must include your digital signature where indicated. Email your counselor once you have completed the registration forms and uploaded your required documents.

**STEP 6****COUNSELOR INTERVIEW**

Once received, your counselor will review your registration documents and next steps to finalize the admissions process with you.

**STEP 7****REGISTRATION & ENROLLMENT**

Once your registration packet has been approved and you have your funding, you are ready to register. Your counselor and/or financial aid will assist you to complete your final step.

**COSTS LISTED IN THIS PUBLICATION REFLECT FEES FOR THE CURRENT ENROLLMENT PERIOD UNLESS OTHERWISE NOTED.**

- In-state fees this enrollment period for Career and Technical Education programs include: a \$40 non-refundable registration fee for an 18 week semester or a \$20 non-refundable registration fee for a 9 week term; tuition; applicable lab fees; and a non-refundable \$13 insurance fee for Health Science programs. There is an annual \$20 student activity fee for all programs.
- Applicants enrolling in a certificate program must provide documentation showing 12 consecutive months of Florida Residency to be eligible for in-state tuition and fees; non-resident tuition and fees are higher.

- Applicants enrolled in a Lifelong Learning (LL) course pay an hourly rate plus a \$20 non-refundable registration fee and an annual \$20 student activity fee.
- Tuition and lab fees are subject to change by the Florida Legislature and/or Broward County Public Schools.
- Payment is due at time of registration.
- Standard Enrollment Period: 18 weeks (fall & winter semesters); 9 weeks (summer term). Please note, Pre-College programs are on a trimester calendar.
- Registration is on a first come, first served basis.
- Classes not meeting minimum enrollment requirements will be canceled.
- Career Dual Enrollment (CDE) is offered to high school students meeting specific entry criteria. For additional information visit [www.atlantictechnicalcollege.edu/career-dual-enrollment](http://www.atlantictechnicalcollege.edu/career-dual-enrollment).
- All Career and Technical Education (CTE) programs are approved for Veterans benefits by the State Approving Agency.

## ***PROGRAM OFFERINGS AND MORE***

<b>Office of Student Affairs .....</b>	<b>6</b>
<b>Career Center and Alumni Relations .....</b>	<b>9</b>
<b>Campus Locations .....</b>	<b>10</b>
<b>Pre-College Academic Studies</b>	
GED® Test Preparation .....	11
Applied Academics .....	11
Adult Basic Education .....	12
<b>Pre-College ESOL .....</b>	<b>12</b>
<b>Rapid Credentialing / Career and Technical Education (CTE) Programs</b>	
<b>Rapid Credentialing .....</b>	<b>14</b>
<b>Career and Technical Education (CTE) Programs</b>	
Architecture and Construction .....	18
Business Management and Administration .....	20
Lifelong Learning - Business Management and Administration .....	23
Health Science and Practical Nursing .....	23
Hospitality and Tourism .....	30
Information Technology .....	30
Manufacturing .....	33
Transportation, Distribution and Logistics .....	34
Apprenticeship .....	36
<b>Certification/Licensure Exams (Industry Credentials) .....</b>	<b>37</b>
<b>School Calendars .....</b>	<b>38</b>

## OFFICE OF STUDENT AFFAIRS OFFICE HOURS

*Please call to schedule an appointment.*

### MAIN CAMPUS (754-321-5200)

Monday - Friday	7:00 a.m. - 4:00 p.m.	Building 10
*Monday - Thursday	7:00 a.m. - 6:00 p.m.	Building 10

### ARTHUR ASHE, JR. CAMPUS (754-322-2800)

#### Pre-College Programs

Monday - Friday	8:00 a.m. - 4:00 p.m.	Learning Commons, Room 205
-----------------	-----------------------	----------------------------

#### Career and Technical Education

Monday - Friday	8:00 a.m. - 4:00 p.m.	Building 2, Room 206
-----------------	-----------------------	----------------------

### ESOL CAMPUS @ COCONUT CREEK HS - DAY (754-321-5350)

Monday - Friday	8:00 a.m. - 4:00 p.m.	Portable 17
-----------------	-----------------------	-------------

### ESOL - MAIN CAMPUS - NIGHT & SATURDAY (754-321-5200)

*Monday - Thursday	4:30 p.m. - 6:00 p.m.	Building 10
**Saturday	8:00 a.m. - 12:00 p.m.	Building 10

\*Anticipated Opening - January 11, 2021

\*\*Anticipated Opening - January 23, 2021



## **CERTIFIED SCHOOL COUNSELORS & ADVISORS** (Technical Programs)

**Alicia Grigull, Director, Office of Student Affairs**  
Alicia.Grigull@browardschools.com | 754-321-5177

**Dana Allen, Certified School Counselor**

754-322-2818

Dana.Allen@browardschools.com

**Arthur Ashe, Jr. Campus**

1701 NW 23rd Avenue | Fort Lauderdale, FL 33311

**Health Science and Practical Nursing**

Practical Nursing

---

**Ruth Eloi, Certified School Counselor**

754-321-5187

Ruth.Eloi@browardschools.com

**Health Science**

Central Sterile Processing Technician | Dental Assisting Technology and Management (ATD) |  
Electrocardiograph Technology | Hemodialysis Technician | Medical Assisting |  
Medical Coder/Biller (ATD) | Mental Health Technician | Orthopedic Technology |  
Patient Care Assistant (Rapid Credentialing) | Patient Care Technician | Pharmacy Technician (ATD)

---

**Doris Gonzalez, Certified School Counselor**

754-321-5188

Doris.Gonzalez@browardschools.com

**Business Management and Administration**

Accounting Operations | Administrative Office Specialist | Business Management and Analysis |  
Court Reporting Technology; 2 and 3 | Customer Assistance Technology (Rapid Credentialing) |  
Legal Administrative Specialist | Medical Administrative Specialist

**Hospitality & Tourism**

Professional Culinary Arts and Hospitality

---

**Vania Humphrey, Certified School Counselor**

754-321-5167

VDHumphrey@browardschools.com

**Architecture and Construction**

Carpentry | Drafting | Electricity | Heating, Ventilation, Air-Conditioning/Refrigeration (HVAC/R) (also Rapid Credentialing)

**Manufacturing**

Machining Technologies (also Rapid Credentialing) | Welding Technology

---

**Brooke Lehmejian, Certified School Counselor**

754-321-5266

Brooke.Lehmejian@browardschools.com

**Information Technology**

Applied Information Technology | Database Application Development and Programming |  
Game/Simulation/Animation Programming | Network Support Services (also Rapid Credentialing) | Web Development

**Transportation, Distribution and Logistics**

Advanced Automotive Service Technology (Toyota T-TEN) | Automotive Collision  
Technology Technician | Automotive Service Technology (also Rapid Credentialing) | Avionics Systems Technician

---



## **CERTIFIED SCHOOL COUNSELORS & ADVISORS** **(Pre-College Programs and High School)**

### ***Nabila Bouqlata, Career Advisor***

754-321-5263

Nabila.Bouqlata@browardschools.com

Pre-College Academic Studies Career Advisor | Success Coach | GED® Test Preparation

---

### ***Cindy Burdick, Certified School Counselor***

754-322-2852

Cindy.Burdick@browardschools.com

#### **Arthur Ashe, Jr. Campus**

**1701 NW 23rd Avenue | Fort Lauderdale, FL 33309**

Pre-College Program Counselor | Adult Career Pathways | Success Coach | GED® Test Preparation

---

### ***Mary Kahn, Career Advisor***

754-321-5257

Mary.Kahn@browardschools.com

Pre-College Academic Studies Career Advisor | Success Coach | GED® Test Preparation

---

### ***Chandler White, Certified School Counselor***

754-321-5164

Chandler.White@browardschools.com

Pre-College Academic Studies Counselor | Adult Career Pathways | Success Coach | GED® Test Preparation

---

### ***Alba Guadalupe, Certified School Counselor***

754-321-5269

Alba.Guadalupe@browardschools.com

Guidance Director - High School | Certified School Counselor 11th and 12th Grade

---

### ***Kimberly Jackson, Certified School Counselor***

754-321-5165

Kimberly.Jackson@browardschools.com

Certified School Counselor - High School 9th and 10th Grade

---



## SUPPORT SERVICES

<b><i>Soraya Aleman</i></b>	Director, Office of Financial Aid	754-321-5185
<b><i>Hallema Collier</i></b>	Magnet Coordinator   Career Dual Enrollment Liaison	754-321-5307
<b><i>Elizabeth DeJesus</i></b>	BRACE Advisor	754-321-5115
<b><i>Meryl Eisenberg</i></b>	504 Liaison   Disability Services Advisor	754-321-5259
<b><i>Debbie Evangelista</i></b>	ESE Specialist - High School	754-321-5193
<b><i>Roseanne Farino</i></b>	Apprenticeship Coordinator	754-321-5119
<b><i>Vera Alvarez - Fernandez</i></b>	International Student Advisor	754-321-5737
<b><i>Rebecca Miller</i></b>	Career and Technical Education Advisor, High School	754-321-5122
<b><i>Rosemary Petrill</i></b>	Industry Certifications	754-321-5305
<b><i>Joanne Santana</i></b>	Veterans School Certifying Official	954-614-1608
<b><i>Teresa Skiles</i></b>	ESE Support Facilitator - High School	754-321-5308
<b><i>Jean Vilus</i></b>	ESOL Career Advisor/Department Chair	754-321-5352
<b><i>Nicole Willis</i></b>	Business & Economic Development   Career Services Advisor   Job Placement Assistance	754-321-5179
<b><i>Tia Wright</i></b>	Career Services Advisor   Recruitment	754-322-2821

## CAREER CENTER AND ALUMNI RELATIONS

### CAREER CENTER SERVICES

Nicole Willis  
754-321-5179  
Nicole.Willis@browardschools.com

- Job Placement Assistance
- Resume Reviews
- Interview Skills/Big Interview Website
- College Central Network Job Board
- Job/Career Fairs

Employers/Students/Alumni:  
Be sure to register on College Central  
[www.collegecentral.com/atlanticttechnicalcollege](http://www.collegecentral.com/atlanticttechnicalcollege)

Hours of Operation:  
Monday - Friday  
8:30 a.m. to 3:30 p.m.

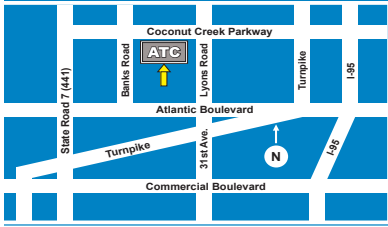
### ALUMNI ASSOCIATION

Jennifer Long  
754-321-5802  
Jennifer.Long@browardschools.com

- Access to College Central Network
- Alumni Spotlights
- Registration in the Alumni Directory
- Seminars
- Social Networking Events

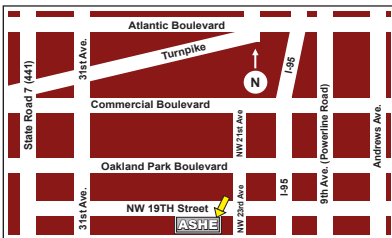


## CAMPUS LOCATIONS



Atlantic Technical College - Main Campus  
4700 Coconut Creek Parkway | Coconut Creek, FL 33063  
754-321-5100

The main campus is located in northern Broward County between Lyons Road and State Road 7 (441), on the corner of Coconut Creek Parkway and Banks Road.



Atlantic Technical College - Arthur Ashe, Jr. Campus  
1701 Northwest 23rd Avenue | Fort Lauderdale, FL 33311  
754-322-2800

The Arthur Ashe, Jr. Campus is located in central Broward County between 31st Avenue (Martin Luther King, Jr. Blvd.) and 9th Avenue (Powerline Road) on the corner of 19th Street and NW 23rd Avenue.



Atlantic Technical College - ESOL Campus @ Coconut Creek HS  
1400 Northwest 44th Avenue | Coconut Creek, FL 33066  
754-321-5350

The ESOL Campus @ Coconut Creek HS is located in northern Broward County between the Florida Turnpike and Lyons Road, on the corner of Coconut Creek Parkway and NW 43rd Avenue.



## PRE-COLLEGE ACADEMIC STUDIES

### EARN YOUR HIGH SCHOOL DIPLOMA!

### GED® TEST PREPARATION

*offered in English and Spanish!*

#### GED® TEST PREPARATION (Placement Test Required)

Remote and on-campus testing is available by appointment only.

For the student who needs to prepare for the GED® Test, instruction is provided in Reasoning through Language Arts, Mathematical Reasoning, Science and Social Studies.

#### ENGLISH

##### MAIN CAMPUS- Class times

Nabila Bouqlata | Career Advisor (754-321-5263)

Monday - Friday	8:00 a.m. - 2:30 p.m.	\$30
*Monday - Thursday	5:00 p.m. - 9:00 p.m.	\$30
**Saturday	8:00 a.m. - 12:00 p.m.	\$30

##### ARTHUR ASHE, JR. CAMPUS - Class times

Cindy Burdick | Certified School Counselor (754-322-2852)

Monday - Friday	8:00 a.m. - 2:30 p.m.	\$30
-----------------	-----------------------	------

#### SPANISH

##### MAIN CAMPUS ONLY

Cristina Urena | Instructor (754-322-2803)

#### EVENINGS - HYBRID (classroom & distance delivery)

### APPLIED ACADEMICS

#### APPLIED ACADEMICS FOR ADULT EDUCATION

For students who are seeking to improve their academic skills to succeed in a certificate program, and/or in the workplace, instruction is provided in Reading, Math and Language.

##### MAIN CAMPUS - Class times

Chandler White | Certified School Counselor (754-321-5164)

Monday - Friday	8:00 a.m. - 2:30 p.m.	\$30
*Monday - Thursday	5:00 p.m. - 9:00 p.m.	\$30
**Saturday	8:00 a.m. - 12:00 p.m.	\$30

##### ARTHUR ASHE, JR. CAMPUS - Class times

Cindy Burdick | Certified School Counselor (754-322-2852)

Monday - Friday	8:00 a.m. - 2:30 p.m.	\$30
-----------------	-----------------------	------

*“Ask us how you can earn your High School Diploma and a Technical Certificate at the same time!”*

**Note:** The Council on Occupational Education (COE) does not accredit avocational programs such as ESOL, ABE, GED® Test Preparation, AAAE or Apprenticeship. In addition, these programs do not qualify for Title IV financial aid assistance.

#### TUITION for GED® Test Preparation and Applied Academics

\$30 flat fee per trimester for all GED® Test Preparation and Applied Academics classes. Applies to in-state and out-of-state residents.

\$20 annual activity fee due at time of registration.

#### REGISTRATION SCHEDULE for GED® Test Preparation & Applied Academics

##### MAIN CAMPUS - Building 10

Monday - Friday	7:00 a.m. - 4:00 p.m.
*Monday - Thursday	7:00 a.m. - 6:00 p.m.
**Saturday	8:00 a.m. - 11:30 a.m.

##### ARTHUR ASHE, JR. CAMPUS Building 2, Learning Commons

Monday - Friday	8:00 a.m. - 3:00 p.m.
-----------------	-----------------------

**Online classes are also available - \$30**



**Mandatory Masks**



**Wash Hands Frequently**



**Practice Social Distancing - 6 ft.**

\*Anticipated Opening - January 11, 2021

\*\*Anticipated Opening - January 23, 2021



## Pre-College Academic Studies - continued

### ADULT BASIC EDUCATION

The Adult Basic Education (ABE) program provides students with academic skills that are necessary for entrance into the GED® Preparation courses as well as the Applied Academics for Adult Education program. ABE courses focus on Reading, Language and Mathematics with student progress being measured by the Basic Skills Test.

This program is open-entry/open-exit, which allows students to begin and complete the program at their individual pace. Instructors are highly qualified experts in their subject and available for face-to-face or online support

#### MAIN CAMPUS - Class times

Chandler White | Certified School Counselor (754-321-5164)

Monday - Friday	8:00 a.m. - 2:30 p.m.	\$30
*Monday - Thursday	5:00 p.m. - 9:00 p.m.	\$30
**Saturday	8:00 a.m. - 12:00 p.m.	\$30



**Online classes are also available - \$30**

## PRE-COLLEGE ESOL

### English for Speakers of Other Languages

The ESOL program prepares English Language Learners with the skills to communicate in English, to improve job skills, and to further their technical and academic studies.

#### ARTHUR ASHE, JR. CAMPUS - Class times

Cindy Burdick | Certified School Counselor (754-322-2852)

Monday - Friday	8:00 a.m. - 2:30 p.m.	\$30
-----------------	-----------------------	------

#### ESOL CAMPUS @ COCONUT CREEK HS - Class times

Jean Vilus | Career Advisor (754-321-5352)

Monday - Friday	8:00 a.m. - 2:30 p.m.	\$30
-----------------	-----------------------	------

#### NIGHT & SATURDAY - Main Campus Only - Class times

Jean Vilus | Career Advisor (754-321-5352)

*Monday - Thursday	5:00 p.m. - 9:00 p.m.	\$30
**Saturday	8:00 a.m. - 12:00 p.m.	\$30

### TUITION for ESOL

\$30 flat fee per trimester for all ESOL classes.  
Applies to in-state and out-of-state residents.  
\$20 annual activity fee / \$15 testing fee.

### REGISTRATION SCHEDULE for ESOL

**All new students must take the CASAS Placement Test prior to registration. See testing information on page 13. Call 754-321-5200 for information.**

#### ARTHUR ASHE, JR. CAMPUS

##### Building 2, Learning Commons

Monday - Friday	8:00 a.m. - 3:00 p.m.
-----------------	-----------------------

#### ESOL CAMPUS @ COCONUT CREEK HS

##### Portable 17

Monday - Friday	8:00 a.m. - 3:00 p.m.
-----------------	-----------------------

#### MAIN CAMPUS - Night & Saturday

##### Building 10

*Monday - Thursday	4:30 p.m. - 6:00 p.m.
**Saturday	8:00 a.m. - 11:30 a.m.

\*Anticipated Opening - January 11, 2021

\*\*Anticipated Opening - January 23, 2021

**ESOL - continued****INTEGRATED EDUCATION AND TRAINING  
TECHNICAL PROGRAMS**

This program gives English Language Learners the skills to communicate in English and prepares the student to enter a certificate program in Business, Health, or Information Technology. This is part of Florida's Integrated Education and Training and only available at Atlantic Technical College. For more information, contact the program advisor at 754-321-5352.

**Classes are held on the Main Campus.**

**CASAS TESTING INFORMATION**

Required for ESOL classes.

Remote and on-campus testing is available by appointment only.

For more information, contact (754-321-5200).

- Testing Fee: \$15
- Arrive at least fifteen (15) minutes before start time.
- Accommodations for testing and classes are available to qualified individuals. For additional information, please contact the 504 Liaison (**before testing**) at one of the following locations: ATC Main Campus 754-321-5259; Arthur Ashe, Jr. Campus 754-322-2818; and ESOL Campus @ Coconut Creek HS 754-321-5352.

**On Campus Testing Locations:**

**ARTHUR ASHE, JR. CAMPUS**  
**(754-322-2800)**

Building 2, Learning Commons

**ESOL CAMPUS @ COCONUT CREEK HS**  
**(754-321-5350)**

Portable 17

**MAIN CAMPUS**  
**(754-321-5200)**

Building 6



## RAPID CREDENTIALING / CAREER AND TECHNICAL EDUCATION (CTE) PROGRAMS



Programs that can be completed in one (1) year or less.

ATC is approved by the Commission of the Council on Occupational Education (COE) to deliver career and technical education instruction using the following instructional methods:

**Traditional:** 100% classroom-based

**Hybrid:** Less than 50% of required instructional hours available via distance education (online)

**Distance Education:** 50% or more of required instructional hours available via distance education (online)

### Rapid Credentialing

Rapid Credentialing was established by the Department of Education to provide Floridians with the essential skills to accelerate Florida's economic recovery.

For more information, e-mail [KathieDileonardo@browardschools.com](mailto:KathieDileonardo@browardschools.com)

#### AUTOMOTIVE SERVICE TECHNOLOGY (AST)

*Automotive Brake Systems Technician*

**Program Length:** 450 hours

**Program Cost:** \$1,525 (approximate tuition & fees)

**Program Offered:** January 11, 2021

**Delivery Method:** Traditional - 100% classroom based

**Credential:** ASE A5 Brakes



Students in the AST program are initially trained in the use of technical and flat-rate information systems, as well as a variety of hand and power tools. Following the introduction course, students will receive specialty training in automotive braking systems. All instruction is in alignment with the ASE Education Foundation for professional technician certification and provides for completers of the program to sit for the ASE A5 Brakes industry credential.

Days	Times	Hours and Costs this term	
Monday - Friday	7:05 a.m. - 1:50 p.m.	450 hours	\$1,545

## CUSTOMER ASSISTANCE TECHNOLOGY

**Program Length:** 450 hours

**Program Cost:** \$1,368 (approximate tuition & fees)

**Program Offered:** January 11, 2021

**Delivery Method:** Distance - 50% or more instruction hours via distance (online)

**Credential:** MOS Bundle and CIW Internet Business Associate

This program focuses on information technology, interpersonal skills, and business communication. Students will gain hands-on experience with essential software applications using Microsoft Office 2016. Students will be qualified for high demand positions across multiple industries and will also have the opportunity to earn an industry credential as a Microsoft Office Specialist and/or CIW Internet Business Associate.

**100% Distance:** with mandatory virtual meetings

Days	Times	Hours and Costs this term	
Distance: Monday - Friday	5:30 p.m. - 8:30 p.m	456 hours	\$1,405
Virtual Meeting: Tuesday, Thursday	.		



## HEATING, VENTILATION, AIR CONDITIONING/REFRIGERATION (HVAC/R)

### *HVAC/R Technician*

**Program Length:** 500 hours

**Program Cost:** \$1,740 (approximate tuition & fees)

**Program Offered:** TBD

**Delivery Method:** Traditional - 100% classroom based

**Credential:** EPA Section 608 and HVAC Excellence – Electrical

Students entering the HVAC/R Technician (Rapid Credential) program will become proficient in the installation, repair, and maintenance of residential and commercial air conditioning, refrigeration and heating systems. Heavy emphasis is placed on electrical systems. The HVAC/R students will also receive instruction in layout and design of electrical system schematics. All instruction is in alignment with the EPA, as well as HVAC Excellence's alignment to national standards for the professional technician.

Days	Times	Hours and Costs this term	
Monday – Friday	7:05 a.m. – 1:50 p.m.	510 hours	\$1,794

There may be additional costs associated with books, uniforms, specific tools, equipment and other related items.

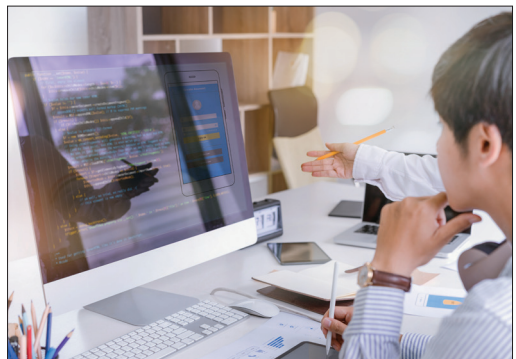


**MACHINING TECHNOLOGIES***Manufacturing Technician***Program Length:** 300 hours**Program Cost:** \$955 (approximate tuition & fees)**Program Offered:** January 11, 2021**Delivery Method:** Distance - 50% or more instruction hours via distance (online)**Credential:** NIMS Measurement, Materials & Safety

Machining Technologies students will learn how to set up and operate the following types of machines: contour saw, drill press, lathe, milling machine, grinder, and CNC (Computerized Numerical Control) machines. Instruction also includes the use of precision measuring instruments such as, layout and inspection tools, micrometers, and gauges. Related trade math and blueprint reading are part of the program and are used extensively in laboratory activities.

**Blended Distance:** with mandatory on-campus labs

Days	Times	Hours and Costs this term	
Distance: Monday – Thursday	4:00 p.m. – 7:00 p.m.	297 hours	\$966
On-campus Labs: Saturday	8:00 a.m. – 12:00 p.m.		

**NETWORK SUPPORT SERVICES - COMPTIA A+***CompTIA A+ Certification Preparation***Program Length:** 300 hours**Program Cost:** \$955 (approximate tuition & fees)**Program Offered:** January 25, 2021**Delivery Method:** Distance - 50% or more instruction hours via distance (online)**Credential:** CompTIA A+

This course prepares students for entry-level employment in the Information Technology field such as a Computer User Support Specialist. Students will have the opportunity to earn their CompTIA A+ industry standard certification.

**Blended Distance:** with mandatory on-campus weekly labs

Days	Times	Hours and Costs this term	
Distance: Monday – Friday	10:00 a.m. – 1:00 p.m.	300 hours	\$955
On-campus Labs: Tuesday, Thursday			

## NETWORK SUPPORT SERVICES - COMPTIA NETWORK+

*CompTIA Network+ Certification Preparation*

**Program Length:** 300 hours

**Program Cost:** \$955 (approximate tuition & fees)

**Program Offered:** January 25, 2021

**Delivery Method:** Distance - 50% or more instruction hours via distance (online)

**Credential:** CompTIA Network+

This program prepares students for entry-level employment in the Information Technology field such as a Network and Computer Systems Administrator. Students will have the opportunity to earn their CompTIA Network+ industry standard certification.

**100% Distance:** with mandatory virtual meetings

Days	Times	Hours and Costs this term	
Distance: Monday – Friday	5:30 p.m. - 9:30 p.m.	300 hours	\$955
Virtual Meeting: Tuesday, Thursday			

## PATIENT CARE ASSISTANT (*Arthur Ashe, Jr. Campus*)

**Program Length:** 290 hours

**Program Cost:** \$923 (approximate tuition & fees)

**Program Offered:** December 10, 2020 / March 8, 2021

**Delivery Method:** Traditional - 100% classroom based

**Credential:** Certified Nursing Assistant (CNA)

The curriculum prepares students for employment as cross-trained nursing assistants and provides foundational knowledge and skills. Students receive training in communication and interpersonal skills, infection control, safety/emergency procedures, and promoting residents' independence and respecting patient rights. The PCA works in the hospital setting as a member of the healthcare team under the direction of the nurse. Duties include taking vital signs and assisting patients with basic tasks.

Days	Times	Hours and Costs this term	
Monday – Friday	7:05 am – 1:50 pm	300 hours	\$953



There may be additional costs associated with books, uniforms, specific tools, equipment and other related items.

## CAREER AND TECHNICAL EDUCATION (CTE) PROGRAMS

### *Architecture and Construction* / 754-321-5167

#### CARPENTRY

**Program Length:** 1200 Hours (approximately 12 months full-time)

**Program Cost:** \$3,975 (approximate tuition & fees)

**Program Offered:** August & January

**Delivery Method:** Traditional - 100% classroom based

Train to become a Rough or Finish Carpenter in the rapidly growing Building Construction Industry! Qualified students may receive advanced placement in the Carpentry Apprenticeship program.

#### Days

Monday - Friday

#### Times

7:05 a.m. - 1:50 p.m.

#### Hours and Costs this term

588 hours      \$1,941



#### DRAFTING

**Program Length:** 1500 Hours (approximately 14 months full-time)

**Program Cost:** \$4,675 (approximate tuition & fees)

**Program Offered:** August & January

**Delivery Method:** Traditional - 100% classroom based

Students will focus on the planning, interpreting and preparing of architectural, mechanical, electrical, plumbing, civil, structural, and other 2-D and 3-D technical drawings and sketches using Solidworks, AutoCAD, and Revit.

#### Days

Monday - Friday

#### Times

7:05 a.m. - 1:50 p.m.

#### Hours and Costs this term

588 hours      \$1,824

## ELECTRICITY

**Program Length:** 1200 Hours (approximately 12 months full-time)

**Program Cost:** \$3,855 (approximate tuition & fees)

**Program Offered:** January

**Delivery Method:** Traditional - 100% classroom based

Train in basic electricity, residential and commercial wiring, and learn to troubleshoot and repair electrical systems. Program content also includes building and wiring codes, including the National Electrical Code. Emphasis is placed on skill development, and much of the program is project based.

Special Note: With additional successful testing, the completion of this program may be used as a substitute for the first year of an Electrical Apprenticeship program.

Days	Times	Hours and Costs this term	
Monday - Friday	7:05 a.m. - 1:50 p.m.	588 hours	\$1,882
Monday - Thursday	6:00 p.m. - 9:45 p.m.	280 hours	\$928

## HEATING, VENTILATION, AIR-CONDITIONING/REFRIGERATION (HVAC/R)

**Program Length:** 1350 Hours (approximately 12 months full-time)

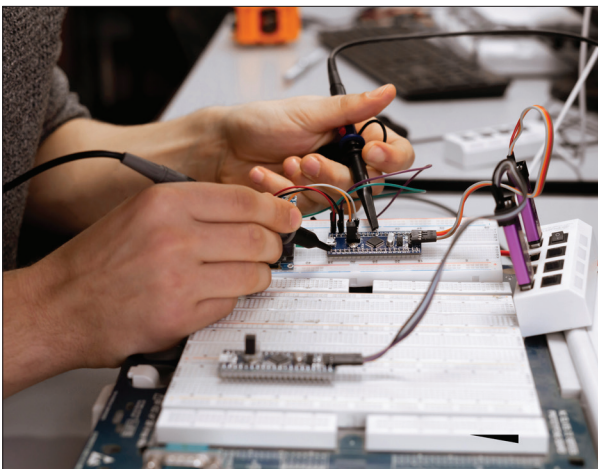
**Program Cost:** \$4,725 (approximate tuition & fees)

**Program Offered:** August & January

**Delivery Method:** Traditional - 100% classroom based

Train to install and maintain residential and commercial HVAC/R systems. Qualified students may receive advanced placement in the HVAC/R Apprenticeship program.

Days	Times	Hours and Costs this term	
Monday - Friday	7:05 a.m. - 1:50 p.m.	588 hours	\$2,059
Monday - Thursday	6:00 p.m. - 9:45 p.m.	280 hours	\$1,012



There may be additional costs associated with books, uniforms, specific tools, equipment and other related items.



## ***Business Management and Administration | 754-321-5188***

### **ACCOUNTING OPERATIONS**

**Program Length:** 900 Hours (approximately 10 months full-time)

**Program Cost:** \$2,770 (approximate tuition & fees)

**Program Offered:** August, January & June

**Delivery Method:** Traditional - 100% classroom based

Distance - 50% or more instruction hours via distance (online)



Students will receive a broad foundation of knowledge and skills expanding the traditional role of the bookkeeper, including double-entry accounting, preparation of financial statements and payroll processing. Students will also learn accounting-specific software, including Excel, Quickbooks and Microsoft Office.

Days	Times	Hours and Costs this term	
Monday - Friday	7:05 a.m. - 1:50 p.m.	588 hours	\$1,794
Monday - Friday	7:05 a.m. - 10:05 a.m.	294 hours	\$927

**Blended Distance:** with mandatory on-campus weekly labs.

Distance:	Monday, Wednesday	240 hours	\$768
On-campus Lab:	Tuesday, Thursday 6:30 p.m. - 9:30 p.m.		

**100% Distance:** with mandatory virtual weekly labs.

Distance:	Monday, Wednesday, Thursday, Friday	294 hours	\$927
Virtual Lab:	Tuesday 5:30 p.m. - 8:30 p.m.		

### **ADMINISTRATIVE OFFICE SPECIALIST**

**Program Length:** 1050 Hours (approximately 10 months full-time)

**Program Cost:** \$3,213 (approximate tuition & fees)

**Program Offered:** August, January & June

**Delivery Method:** Traditional - 100% classroom based

Distance - 50% or more instruction hours via distance (online)



Students will be prepared for employment as an Administrative Assistant, Administrative Specialist, Front Desk Specialist, and Information Technology Assistant.

Learn Microsoft Office, keyboarding, document processing, bookkeeping fundamentals, and other support skills to become an essential member of any office or business.

Days	Times	Hours and Costs this term	
Monday - Friday	7:05 a.m. - 1:50 p.m.	588 hours	\$1,794
Monday - Friday	7:05 a.m. - 10:05 a.m.	294 hours	\$927

**Blended Distance:** with mandatory on-campus weekly labs.

Distance:	Monday, Tuesday, Wednesday, Friday	294 hours	\$927
On-campus Lab:	Thursday 6:00 p.m. - 9:00 p.m.		

**100% Distance:** with mandatory virtual weekly labs.

Distance:	Monday, Wednesday, Thursday, Friday	294 hours	\$927
Virtual Lab:	Tuesday 5:30 p.m. - 8:30 p.m.		

## BUSINESS MANAGEMENT & ANALYSIS

**Program Length:** 900 Hours (approximately 10 months full-time)

**Program Cost:** \$2,770 (approximate tuition & fees)

**Program Offered:** August, January & June

**Delivery Method:** Traditional - 100% classroom based

Distance - 50% or more instruction hours via distance (online)



The purpose of this program is to prepare students for careers in business management and administration. The content includes communication skills, accounting concepts and practices, business law concepts, leadership skills, business computer applications, business ethics, governmental regulations, human resources and management issues, financial and data analysis, and career development.

Days	Times	Hours and Costs this term	
Monday - Friday	7:05 a.m. - 1:50 p.m.	588 hours	\$1,794
Monday - Friday	7:05 a.m. - 10:05 a.m.	294 hours	\$927

**100% Distance:** with mandatory virtual weekly labs.

Distance:	Tuesday, Wednesday, Thursday, Friday		
Virtual Lab:	Monday	5:30 p.m. - 8:30 p.m.	294 hours \$927

## COURT REPORTING - NCRA APPROVED PROGRAM

**Program Length:** 2850 Hours (approximately 28 months full-time)

**Program Cost:** \$9,343 (approximate tuition & fees)

**Program Offered:** August, January, March & June

**Delivery Method:** Traditional - 100% classroom based

Distance - 50% or more instruction hours via distance (online)



Become a Court Reporter writing verbatim testimony for courtroom trials and depositions. This program places strong emphasis on conflict-free theory, realtime writing, and speed development. Students who reach the speed of 200 words per minute participate in an internship that enables the student to sit in on trials and depositions with a working reporter.

Students shall pass three (3), five-minute tests with 95% accuracy at each of the following speeds: 225 wpm testimony (two-voice), 200 wpm jury charge, and 180 wpm literary.

Student shall complete at least 40 verified hours of actual writing time during the internship experience.

Court Reporting Technology:	750 hours (approximately 7 months)
Court Reporting 2:	600 hours (approximately 6 months)
Court Reporting 3:	1500 hours (approximately 15 months)

**Totals:** 2850 hours 28 months

Days	Times	Hours and Costs this term	
Monday - Friday	8:00 a.m. - 2:30 p.m.	588 hours	\$1,912

**100% Distance:** with mandatory virtual weekly labs.

Distance:	Monday, Tuesday, Wednesday, Thursday, Friday	588 hours	\$1,912
Virtual Lab:	Various options available. Please see counselor.		

## LEGAL ADMINISTRATIVE SPECIALIST

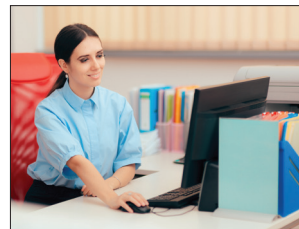
**Program Length:** 1050 Hours (approximately 10 months full-time)

**Program Cost:** \$3,213 (approximate tuition & fees)

**Program Offered:** August, January & June

**Delivery Method:** Traditional - 100% classroom based

Distance - 50% or more instruction hours via distance (online)



Students will be prepared for employment as a Legal Administrative Specialist, Information Technology Assistant, Front Desk Specialist and Administrative Support.

Learn Microsoft Office applications, legal terminology, legal document production, and legal office procedures.

Days	Times	Hours and Costs this term	
Monday - Friday	7:05 a.m. - 1:50 p.m.	588 hours	\$1,794
Monday - Friday	7:05 a.m. - 10:05 a.m.	294 hours	\$927

**Blended Distance:** with mandatory on-campus weekly labs.

Distance:	Monday, Tuesday, Wednesday, Friday	294 hours	\$927
On-campus Lab:	Thursday 6:00 p.m. - 9:00 p.m.		

**100% Distance:** with mandatory virtual weekly labs.

Distance:	Monday, Wednesday, Thursday, Friday	294 hours	\$927
Virtual Lab:	Tuesday 5:30 p.m. - 8:30 p.m.		

## MEDICAL ADMINISTRATIVE SPECIALIST

**Program Length:** 1050 Hours (approximately 10 months - full time)

**Program Cost:** \$3,213 (approximate tuition & fees)

**Program Offered:** August, January & June

**Delivery Method:** Traditional - 100% classroom based

Distance - 50% or more instruction hours via distance (online)



Students will be prepared for employment as medical secretaries, medical office clerks, medical insurance secretaries, medical records clerks, and medical administrative specialists.

Learn medical office procedures, medical insurance, medical terminology, Medisoft and Microsoft Office applications.

Days	Times	Hours and Costs this term	
Monday - Friday	7:05 a.m. - 1:50 p.m.	588 hours	\$1,794
Monday - Friday	7:05 a.m. - 10:05 a.m.	294 hours	\$927

**Blended Distance:** with mandatory on-campus weekly labs.

Distance:	Monday, Tuesday, Wednesday, Friday	294 hours	\$927
On-campus Lab:	Thursday 6:00 p.m. - 9:00 p.m.		

**100% Distance:** with mandatory virtual weekly labs.

Distance:	Monday, Wednesday, Thursday, Friday	294 hours	\$927
Virtual Lab:	Tuesday 5:30 p.m. - 8:30 p.m.		

## Lifelong Learning Courses

### Business Management and Administration

No Orientation or Basic Skills Test Required

#### INTRODUCTION TO MICROSOFT OFFICE 2016

Introduction to basic computer skills and Microsoft Office 2016 fundamentals

Saturday	8:00 a.m. - 11:00 a.m.	January - March	30 hours	\$138
		March - June	33 hours	\$147

#### INTERMEDIATE MICROSOFT OFFICE 2016

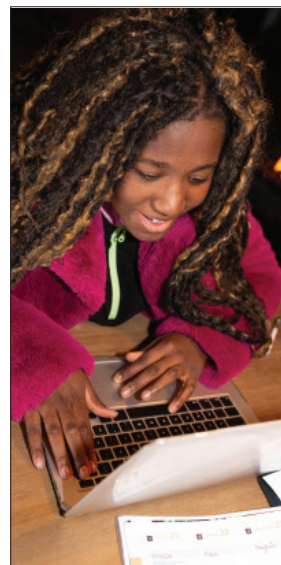
After taking the Introduction to Microsoft Office 2016 course, go beyond the basics of Microsoft Office software, including Word, PowerPoint and Excel.

Saturday	8:00 a.m. - 11:00 a.m.	January - March	30 hours	\$138
		March - June	33 hours	\$147

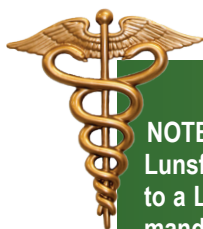
#### QUICKBOOKS

Fundamental concepts and procedures of Quickbooks for automated bookkeeping. Prerequisite: Bookkeeping fundamentals or experience in the bookkeeping field. Requires basic computer knowledge.

Thursday	6:30 p.m. - 9:30 p.m.	January - March	30 hours	\$138
		March - June	30 hours	\$138



## Health Science and Practical Nursing | 754-321-5187 | Main Campus 754-322-2818 | Arthur Ashe, Jr. Campus



**NOTE:** In accordance with requirements set forth by the Joint Commission and the Jessica Lunsford Act, students applying for entrance into any Health Science program must submit to a Level 2 criminal background check and take a drug screening test. This requirement is mandated due to the fact that all Health Science students must participate in a clinical rotation in a healthcare facility as a part of their training. The applicant is responsible for paying for the costs of both tests. The results of these tests may prevent the applicant from either entering or remaining in a Health Science program. Students who are not cleared on their background check or test positive for illegal drugs will not be allowed access to healthcare facilities for clinical externships and therefore will not be able to complete the program. In addition to a background check and drug screening, all students registering for any of the Health Science programs are required to have current immunizations and a yearly physical exam. Prospective students who do not have a valid Social Security Number may encounter difficulties within licensure programs. Please contact the program counselor for specific information. Additionally, all students entering or re-entering the Practical Nursing program must take the Test of Essential Academic Skills (TEAS) and meet minimum requirements.





## CENTRAL STERILE PROCESSING TECHNICIAN

**Program Length:** 650 Hours (approximately 6 months full-time)

**Program Cost:** \$2,227 (approximate tuition & fees)

**Program Offered:** August & January

**Delivery Method:** Traditional - 100% classroom based

Hybrid - Less than 50% of required instructional hours available via distance education (online)

This program is designed to train and prepare students to work as sterile processing or central supply technicians in a hospital or surgical out-patient setting. Students will be taught a variety of skills and competencies to effectively decontaminate, prepare, disinfect and sterilize instrument trays for surgical procedures. Students will also learn the various methods of inventory control and how to manage the storage and distribution of sterile supplies and patient care equipment.

Central Sterile Processing Technicians are an essential part of the healthcare team and serve as key individuals in preventing infections and the spread of disease in hospitals and surgical centers. A clinical externship is included in the program.

Days	Times	Hours and Costs this term	
Monday - Friday	7:30 a.m. - 2:15 p.m.	654 hours	\$2,068



## DENTAL ASSISTING TECHNOLOGY & MANAGEMENT

### APPLIED TECHNOLOGY DIPLOMA - ATD

**Program Length:** 1230 Hours (approximately 12 months full-time)

**Program Cost:** \$4,302 (approximate tuition & fees)

**Program Offered:** January

**Delivery Method:** Traditional - 100% classroom based

Students will be taught the basic knowledge and skills to offer direct chairside assistance to the dentist, expose dental radiographs, and educate and instruct patients in preventive dental care. Students will be trained in infection control procedures, disease prevention, dental procedures and instruments and business office procedures. Upon successful completion of the program and in accordance with state guidelines, students are issued an Applied Technology Diploma (ATD) in Dental Assisting Technology and Management with Expanded Duties and Dental Radiography.

Days	Times	Hours and Costs this term	
Monday - Friday	7:05 a.m. - 1:50 p.m.	588 hours	\$1,984

**Note: High School or High School Equivalency Diploma required.**

The program in dental assisting is accredited by the Commission on Dental Accreditation (CODA). The Commission is a specialized accrediting body recognized by the United States Department of Education.

Commission on Dental Accreditation (CODA)

211 East Chicago Avenue • Chicago, IL 60611

312-440-4653 • www.ada.org/en/coda



Tuition is based on Florida residency. Non-resident tuition is higher.



## ELECTROCARDIOGRAPH TECHNOLOGY

**Program Length:** 465 Hours (approximately 4 months full-time)

**Program Cost:** \$1,662 (approximate tuition & fees)

**Program Offered:** August

**Delivery Method:** Traditional - 100% classroom based

Hybrid - less than 50% of required instructional hours available via distance education (online)

Train to become an EKG/Cardiovascular Technician and work in a variety of healthcare facilities including hospitals, nursing homes, clinics and physicians offices. Students learn how to perform a 12-lead EKG, properly maintain diagnostic equipment, recognize normal and abnormal sinus rhythms and monitor patients for cardiovascular disorders.

Days	Times	Hours and Costs this term
Monday - Friday	7:05 a.m. - 1:50 p.m.	<i>Next Class begins: August 2021</i>

## HEMODIALYSIS TECHNICIAN

**Program Length:** 600 Hours (approximately 6 months full-time)

**Program Cost:** \$2,074 (approximate tuition & fees)

**Program Offered:** August & January

**Delivery Method:** Traditional - 100% classroom based

Hybrid - less than 50% of required instructional hours available via distance education (online)

Students are taught the skills necessary for employment as hemodialysis technicians or dialysis technicians. Hemodialysis technicians have been members of the dialysis team since the beginning of the dialysis program. They usually serve in two (2) capacities; one involves the assembly and maintenance of the dialysis equipment and the other focuses on patient care. Often the hemodialysis technician duties will combine both the patient care and equipment care responsibilities. The technician works with all members of the dialysis team but is most closely aligned with a nurse who delegates and supervises patient care.

Days	Times	Hours and Costs this term	
Monday - Friday	7:30 a.m. - 2:15 p.m.	600 hours	\$1,903

**Note:** High School or High School Equivalency Diploma required for clinicals.



## MEDICAL ASSISTING

**Program Length:** 1300 Hours (approximately 12 months full-time)

**Program Cost:** \$4,399 (approximate tuition & fees)

**Program Offered:** January

**Delivery Method:** Traditional - 100% classroom based

Hybrid - less than 50% of required instructional hours available via distance education (online)

Students are taught the skills and techniques necessary to become a Medical Assistant and obtain employment in a variety of healthcare facilities. This multi-skilled health professional is trained in clerical and medical office procedures, phlebotomy, EKG, X-Ray, basic patient care techniques and laboratory procedures. Medical assistants perform routine administrative and clinical tasks to keep the offices and clinics of physicians, podiatrists, chiropractors and optometrists running smoothly. They are involved in direct patient care and assist the physician or other health professional during examinations.

Days	Times	Hours and Costs this term	
Monday - Friday	7:05 a.m. - 1:50 p.m.	588 hours	\$1,925



## MEDICAL CODER/BILLER

**APPLIED TECHNOLOGY DIPLOMA - ATD**

**Program Length:** 1110 Hours (approximately 10 months full-time)

**Program Cost:** \$3,558 (approximate tuition & fees)

**Program Offered:** August

**Delivery Method:** Traditional - 100% classroom based

The Medical Coder/Biller program is a comprehensive program that prepares students for employment as entry-level coder/billers.

The main role of a medical coder/biller is to review patient medical records and assign codes to diagnoses and procedures performed by healthcare providers. The treating medical facility can bill insurance for reimbursement based on these codes. The medical coder/biller is responsible for the accurate flow of medical information and patient data between physicians, patients and third-party payers. Most medical coder/billers work on-site in hospitals, clinics, physician offices and for insurance companies.

With the introduction of the electronic health records (EHR), experienced medical coders may have the opportunity to work from home.

Days	Times	Hours and Costs this term
Monday - Friday	7:30 a.m. - 2:15 p.m.	<i>Next Class begins: August 2021</i>

**Note:** High School or High School Equivalency Diploma required for clinicals.

## MENTAL HEALTH TECHNICIAN

**Program Length:** 480 Hours (approximately 5 months full-time)

**Program Cost:** \$1,684 (approximate tuition & fees)

**Program Offered:** August

**Delivery Method:** Traditional - 100% classroom based

Hybrid - less than 50% of required instructional hours available via distance education (online)

Students will be trained for employment as Mental Health Technicians, Psychiatric Aides or Technicians and Nursing Assistants. Mental Health Technicians work in a variety of healthcare facilities under the supervision of a psychiatrist, registered nurse, counselor or social worker and participate in the development and implementation of therapeutic treatment plans for patients with mental health issues. Students will receive training in physical assessment, psychiatric and substance abuse disorders, developmental disabilities, health/wellness education, crisis intervention and basic nursing assistant skills. Upon successful completion of the program, students will have the opportunity to take the Certified Nursing Assistant examination given by the Florida Board of Nursing.

Days	Times	Hours and Costs this term
Monday - Friday	7:05 a.m. - 1:50 p.m.	Next Class begins: August 2021

## ORTHOPEDIC TECHNOLOGY

**Program Length:** 800 Hours (approximately 8 months full-time)

**Program Cost:** \$2,864 (approximate tuition & fees)

**Program Offered:** January

**Delivery Method:** Traditional - 100% classroom based

Hybrid - less than 50% of required instructional hours available via distance education (online)

Students will be taught the skills and techniques necessary to be employed working with orthopedic physicians to treat patients in a variety of health care settings. The program provides the skills and knowledge needed to become a competent orthopedic technologist performing the following services: routine office and departmental procedures; applying, adjusting and removing casts, splints, and braces; setting up, adjusting, and maintaining traction configurations; assisting with the care of acutely injured patients; and assisting the physician in the reduction and/or manipulation of orthopedic injuries. Graduates may be employed in hospitals, clinics, and private practice offices.

Days	Times	Hours and Costs this term
Monday - Friday	7:05 a.m. - 1:50 p.m.	588 hours      \$1,984





## PATIENT CARE TECHNICIAN

**Program Length:** 600 Hours (approximately 6 months full-time)

**Program Cost:** \$2,044 (approximate tuition & fees)

**Program Offered:** January

**Delivery Method:** Traditional - 100% classroom based

The Patient Care Technician is a multi-skilled healthcare worker who, under the direction and supervision of a Registered Nurse, carries out the essential basic bedside patient care functions. Students also receive supplementary training in 12-lead EKG, basic phlebotomy techniques and restorative skills. Upon successful completion of the program, students will have the opportunity to take the Certified Nursing Assistant examination given by the Florida Board of Nursing. This is an excellent course for students who have no previous medical experience and who wish to enter the healthcare field.

Days	Times	Hours and Costs this term	
Monday - Friday	7:05 a.m. - 1:50 p.m.	600 hours	\$1,873



## PHARMACY TECHNICIAN

### **APPLIED TECHNOLOGY DIPLOMA - ATD**

**Program Length:** 1050 Hours (approximately 10 months full-time)

**Program Cost:** \$3,487 (approximate tuition & fees)

**Program Offered:** January

**Delivery Method:** Traditional - 100% classroom based

Hybrid - less than 50% of required instructional hours available via distance education (online)



**Pharmacy Technician is a PTCB-Recognized Education/Training Program**

Pharmacy Technicians generally work under the supervision of a registered pharmacist and perform tasks related to receiving, dispensing, distribution, control, maintenance, compounding, manufacturing, packaging and labeling of pharmaceutical products. Currently, pharmacy technicians are responsible for routine tasks previously performed by pharmacists and for mastering new pharmacy technology as it becomes available.

Days	Times	Hours and Costs this term	
Monday - Friday	7:05 a.m. - 1:50 p.m.	588 hours	\$1,866

**Note:** High School or High School Equivalency Diploma required for clinicals.

## PRACTICAL NURSING (*Arthur Ashe, Jr. Campus*)

**Program Length:** 1350 Hours (approximately 12 months full-time)

**Program Cost:** \$4,557 (approximate tuition & fees)

**Program Offered:** July, September, December, March & June

**Delivery Method:** Traditional - 100% classroom based



The Practical Nursing program prepares an individual to participate in the planning, implementation, and evaluation of nursing care in hospitals and extended care facilities. Students are introduced to the clinical area early in the program. Theory and clinical procedures are integrated to reinforce learning. Licensed graduates may advance into Broward College's Registered Nurse program (LPN/RN).

**Basic skills and ATI TEAS® scores must be met prior to enrollment.**

Days	Times	Hours and Costs this term	
Monday - Friday	7:00 a.m. - 1:45 p.m.	300 hours	\$983

**Note:** High School or High School Equivalency Diploma required.

The Practical Nursing program is accredited by:  
Accreditation Commission for Education in Nursing, Inc.  
3390 Peachtree Rd. NE, Suite 1400 | Atlanta GA 30326  
P: 404-975-5000 | Fax: 404-975-5020  
<http://www.acenursing.org>

Program Approved By: Florida Board of Nursing  
<https://floridasnursing.gov/>

Curriculum approved by: Florida Department of Education  
<http://www.fldoe.org/>

**State License:** Licensed Practical Nursing

### Program Courses:

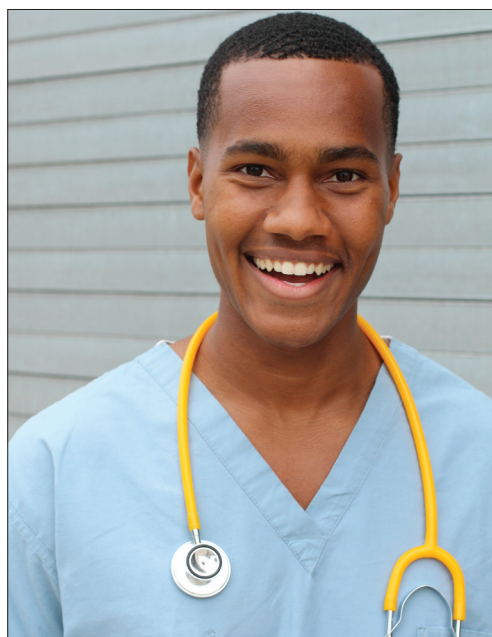
- PRN0098 Practical Nursing Foundations 1 - 300 hrs.
- PRN0099 Practical Nursing Foundation 2 - 300 hrs.
- PRN0290 Medical Surgical Nursing 1 - 300 hrs.
- PRN0291 Medical Surgical Nursing 2 - 300 hrs.
- PRN 0690 Comprehensive Nursing & Transcription Skills - 150 hrs.

### Additional Fees associated with program attendance:

- Physical exam - annual fee varies by provider
- Tuberculin (PPD) 2-Step (X2) or Chest X-Ray - annual fee varies by provider
- Drug Testing (Authorized Lab Only) \$38
- Level 2 Background Check (Approved Vendor Only) \$45
- Compliance Tracking Subscription (Approved Vendor Only) \$18
- ATI TEAS Testing Fee \$68

### Fees associated with licensure:

- \$110 Application & Licensing fee to Board of Nursing
- \$200 to Pearson VUE, Testing Vendor
- Fee varies for LiveScan Services Provider



### Practical Nursing Achievement Data

- |                               |        |
|-------------------------------|--------|
| • ATC Completion Rate 2016-17 | 78%    |
| • ATC NCLEX Pass Rate 2019    | 88.10% |
| • BCPS NCLEX Pass Rate 2019   | 83.98% |
| • ATC Placement Rate 2016-17  | 78%    |



**Mandatory Masks**



**Wash Hands Frequently**



**Practice Social Distancing - 6 ft.**

## Hospitality and Tourism | 754-321-5188

### PROFESSIONAL CULINARY ARTS AND HOSPITALITY

**Program Length:** 1200 Hours (approximately 12 months full-time)

**Program Cost:** \$3,795 (approximate tuition & fees)

**Program Offered:** August, October, January & March

**Delivery Method:** Traditional - 100% classroom based

The program is designed to develop the individual interested in a career in the food service industry. Students will be taught through hands-on experiences in setting-up banquets and food preparation, including meat and poultry fabrication, soups, stocks & sauces, hors d'oeuvres, smoking meats, charcuterie, along with baking and pastry basics; breads, creams, custards, cakes, pies and cookies.

We are a fast-paced environment which will prepare the student to be successful within real-life hospitality careers. In addition, our students learn the critical importance of food safety and sanitation by attaining their ServSafe Food Safety Manager certification. Students are also trained in food service management and learn the importance of healthy cooking and nutrition.

Days	Times	Hours and Costs this term	
Monday - Friday	7:05 a.m. - 2:35 p.m.	661.5 hours	\$2,077



American Culinary Federation  
Education Foundation

This program is accredited by the Accrediting  
Commission of the American Culinary  
Federation Education Foundation (ACFEF)



## Information Technology | 754-321-5266

### APPLIED INFORMATION TECHNOLOGY

**Program Length:** 600 Hours (approximately 6 months full-time)

**Program Cost:** \$1,875 (approximate tuition & fees)

**Program Offered:** August, January & June

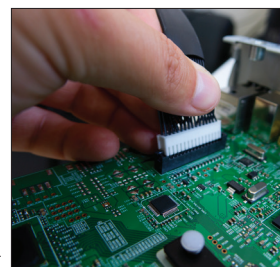
**Delivery Method:** Distance - 50% or more instructional hours via distance education (online).

This program prepares students for a variety of careers in the Applied Information Technology area. The content includes, but is not limited to, computer application skills including computer hardware, software applications, systems support and maintenance, and network concepts.

After successfully completing this program the student will be able to perform computer support services tasks and be prepared to enter a specialized Information Technology career cluster program at an advanced, accelerated level.

**Blended Distance:** with mandatory on-campus labs and finals.

Days	Times	Hours and Costs this term	
Distance:	Monday, Tuesday, Wednesday, Friday	600 hours	\$1,860
On-campus Lab:	Thursday 5:30 p.m. - 8:30 p.m.		



## DATABASE APPLICATION DEVELOPMENT AND PROGRAMMING

**Program Length:** 1200 Hours (approximately 12 months full-time)

**Program Cost:** \$3,615 (approximate tuition & fees)

**Program Offered:** August, January & June

**Delivery Method:** Traditional - 100% classroom based

Distance - 50% or more instruction hours via distance (online)

An approved ORACLE Academy



Learn database design, ANSI JavaScript, Logic, PL/SQL, Python, and SQL for employment as computer programmer assistants, computer programmers, and database programmers.

Days	Times	Hours and Costs this term	
Monday - Friday	7:05 a.m. - 1:50 p.m.	588 hours	\$1,765
Monday - Friday	7:05 a.m. - 10:05 a.m.	294 hours	\$912

**100% Distance:** with mandatory weekly virtual labs and finals.

Distance:	Monday, Tuesday, Wednesday, Friday	294 hours	\$912
Virtual Lab:	Thursday	5:30 p.m. - 8:30 p.m.	



## GAME/SIMULATION/ANIMATION PROGRAMMING

**Program Length:** 600 Hours (approximately 6 months full-time)

**Program Cost:** \$1,925 (approximate tuition & fees)

**Program Offered:** August, January & June

**Delivery Method:** Traditional - 100% classroom based

Distance - 50% or more instruction hours via distance (online)

Students will be prepared for employment in careers such as a Game/Simulation Designer, Game Programmer and Game Software Developer. Learn game/simulation design, storyboarding, development methodologies, programming essentials, animation, game engine utilization and implementation techniques.

Days	Times	Hours and Costs this term	
Monday - Friday	7:05 a.m. - 1:50 p.m.	600 hours	\$1,890
Monday - Friday	7:05 a.m. - 10:05 a.m.	294 hours	\$957

**100% Distance:** with mandatory weekly virtual labs and finals.

Distance:	Monday, Wednesday, Thursday, Friday	294 hours	\$957
Virtual Lab:	Tuesday	6:00 p.m. - 9:00 p.m.	

There may be additional costs associated with books, uniforms, specific tools, equipment and other related items.



## NETWORK SUPPORT SERVICES

**Program Length:** 1050 Hours (approximately 10 months full-time)

**Program Cost:** \$3,318 (approximate tuition & fees)

**Program Offered:** August, January & June

**Delivery Method:** Traditional - 100% classroom based

Distance - 50% or more instruction hours via distance (online)



The Network Support Services program prepares students for employment in network administration as network support specialists. The program prepares students to create, monitor, and maintain computer networks and operate computers and peripheral equipment. Earn your Industry Certifications and develop hands-on skills to give you a competitive edge in the Information Technology field. (An approved CISCO Academy.)

Days	Times	Hours and Costs this term	
Monday - Friday	7:05 a.m. - 1:50 p.m.	588 hours	\$1,853
Monday - Friday	7:05 a.m. - 10:05 a.m.	294 hours	\$957

**Blended Distance:** with mandatory on-campus labs and finals.

Distance:	Monday, Tuesday, Wednesday, Friday	294 hours	\$957
On-campus Lab:	Thursday 5:30 p.m. - 8:30 p.m.		



## WEB DEVELOPMENT

**Program Length:** 1050 Hours (approximately 10 months full-time)

**Program Cost:** \$3,213 (approximate tuition & fees)

**Program Offered:** August, January & June

**Delivery Method:** Traditional - 100% classroom based

Distance - 50% or more instruction hours via distance (online)

Gain the technical knowledge and skills needed to prepare for careers such as Information Technology Assistant, Coder, Assistant Web Designer, and Web Designer. Prepare to design, code, and publish websites for mobile technology, tablets, and desktop formats. The content includes web and interface design, scripting, media integration, and digital marketing techniques.

Days	Times	Hours and Costs this term	
Monday - Friday	7:05 a.m. - 1:50 p.m.	588 hours	\$1,794
Monday - Friday	7:05 a.m. - 10:05 a.m.	294 hours	\$927

**100% Distance:** with mandatory weekly virtual labs and finals.

Distance:	Monday, Tuesday, Wednesday, Friday	294 hours	\$927
Virtual Lab:	Thursday 5:30 p.m. - 8:30 p.m.		

## *Manufacturing I* 754-321-5167

### MACHINING TECHNOLOGIES

**Program Length:** 1500 Hours (approximately 14 months full-time)

**Program Cost:** \$4,750 (approximate tuition & fees)

**Program Offered:** August

**Delivery Method:** Traditional - 100% classroom based

Train to set and operate machines used to make precision manufactured parts. Students complete classroom and lab projects with Computerized Numerical Control (CNC) machinery and learn Computer Aided Design/Computer Aided Manufacturing (CAD/CAM) processes.

Days	Times	Hours and Costs this term	
Monday - Friday	7:05 a.m. - 1:50 p.m.	588 hours	\$1,853

### WELDING TECHNOLOGY

**Program Length:** 1050 Hours (approximately 11 months full-time)

**Program Cost:** \$3,843 (approximate tuition & fees)

**Program Offered:** January

**Delivery Method:** Traditional - 100% classroom based

Students will work in a specialized classroom and practical lab learning how to cut and join metal parts through the application of arc welding. Instruction includes, selection of proper torch tips; adjustment of gas pressure and flame according to the size and characteristics of metal; selection of proper electrodes; adjustment of voltage and current for the type of metal; flame cutting; and use of equipment introducing shield of inert gas (MIG-TIG & FCAWP) around the electric arc to prevent oxidation. Instruction also involves classroom and practical experiences to teach students to fabricate and weld joints and perform fabrication in other areas of welding. Related instruction in blueprint reading and layout is included as an integral part of the program.

Days	Times	Hours and Costs this term	
Monday - Friday	7:05 a.m. - 1:50 p.m.	588 hours	\$2,147



There may be additional costs associated with books, uniforms, specific tools, equipment and other related items.

## Transportation, Distribution and Logistics | 754-321-5266

**AUTOMOTIVE PROGRAMS PREPARE STUDENTS TO TAKE ASE CERTIFICATION EXAMS**



### ADVANCED AUTOMOTIVE SERVICE TECHNOLOGY - TOYOTA T-TEN (Technician Training & Education Network)

**Program Length:** 2400 Hours (24 months full-time)

**Program Cost:** \$8,175 (approximate tuition & fees)

**Program Offered:** August

**Delivery Method:** Traditional - 100% classroom based



This program is an ASE Education Foundation Certified Master Technician Training Program. Train with Toyota/Lexus products using advanced automotive theory and practical classroom applications. Students are trained in areas required for professional technicians to maintain and repair automotive vehicles. Students participate in direct dealership experiences working with qualified Toyota/Lexus technicians.

#### Days

Monday - Friday

#### Times

7:05 a.m. - 2:20 p.m.

#### Hours and Costs this term

*Next Class begins: August 2021*

**Note:** High School or High School Equivalency Diploma required. Basic skills scores must be met prior to enrollment.



### AUTOMOTIVE COLLISION TECHNOLOGY TECHNICIAN

**Program Length:** 1400 Hours (approximately 14 months full-time)

**Program Cost:** \$4,795 (approximate tuition & fees)

**Program Offered:** August & January

**Delivery Method:** Traditional - 100% classroom based

This program is an ASE Education Foundation Certified Collision Repair and Refinishing Master Technician Training Program specializing in classroom and laboratory experiences concerned with all phases of the repair of damaged vehicle bodies and fenders. Train in all five (5) ASE areas required for professional technicians.

#### Days

Monday - Friday

#### Times

7:05 a.m. - 1:50 p.m.

#### Hours and Costs this term

588 hours

\$2,000





## AUTOMOTIVE SERVICE TECHNOLOGY

**Program Length:** 1800 Hours (approximately 18 months full-time)

**Program Cost:** \$6,135 (approximate tuition & fees)

**Program Offered:** August & January

**Delivery Method:** Traditional - 100% classroom based

This program is an ASE Education Foundation Certified Master Technician Training Program that meets national standards. Train in all eight (8) ASE areas required for professional technicians who maintain and repair automotive vehicles.

Days	Times	Hours and Costs this term	
Monday - Friday	7:05 a.m. - 1:50 p.m.	588 hours	\$2,000



## AVIONICS SYSTEMS TECHNICIAN

**Program Length:** 1200 Hours (approximately 12 months full-time)

**Program Cost:** \$3,795 (approximate tuition & fees)

**Program Offered:** January

**Delivery Method:** Traditional - 100% classroom based

Avionics Systems Technicians are specialists who repair and maintain a plane's electronic instruments, such as radio communication devices and equipment, radar systems, and navigation aids. Avionics is a specialization within electronic maintenance and repair. It focuses on aircraft electronics, but encompasses a wide range of job types. An avionics technician is a specialist who is responsible for all the electronics aboard an aircraft as well as the wiring that connects to the electrical system. They run cables, mount antennas, and connect instruments for navigation and engine monitoring. Avionics technicians install radios, autopilots, and passenger entertainment systems. The job demands attention to detail and a commitment to the very highest standards of quality workmanship.

Avionics Systems Technicians:

- test electronic instruments, using circuit testers, oscilloscopes, and voltmeters.
- interpret flight test data to diagnose malfunctions and performance problems.
- assemble components, such as electrical controls and junction boxes, and install software.
- install instrument panels, using hand tools, power tools, and soldering irons.
- repair or replace malfunctioning components.
- keep accurate records of maintenance and repair work.

Days	Times	Hours and Costs this term	
Monday - Friday	7:05 a.m. - 1:50 p.m.	588 hours	\$1,853



## ***APPRENTICESHIP*** / 754-321-5261

**Note: The Council on Occupational Education (COE) does not accredit avocational programs such as ESOL, ABE, GED® Test Preparation, AAAE or Apprenticeship. In addition, these programs do not qualify for Title IV financial aid assistance.**

Apprenticeship is a method of training individuals, in a trade, using a combination of on-the-job skills development and classroom/lab related instruction. Atlantic Technical College serves as the Apprenticeship Local Educational Agency (LEA) for Broward County Public Schools and coordinates the largest number of apprenticeship training programs in Florida, operating in accordance with federal and state laws and rules.

Apprenticeship training offers the individual a chance to “earn while you learn.” In addition to a paid 40-hour on-the-job training work week under the supervision of a journeyperson, apprentices are required to attend related training on selected evenings and/or weekends. Wages increase as the apprentice raises their skill level through training and work experience. Apprenticeship training programs vary in length, depending on the trade and can take from two (2) to five (5) years to complete. There are both union and non-union programs.

### **Apprenticeship training programs include:**

- Brick and Block Masonry (Bricklayer)
- Carpentry (Carpenter)
- Commercial Sign Design and Fabrication (Decorator Trade Show)
- Electrician
- Elevator Constructor/Mechanic
- Glazing (Glaziers)
- Heating & AC Installer/Service
- Industrial Pipefitter (Sprinkler Fitter/Pipefitter)
- Line Erector (Lineman)
- Machining (Machinist)
- Maintenance Repair, Building (Step-Up)
- Operating Engineer
- Painting and Decorating (Painter)
- Plumbing Technology (Plumber & Pipefitter)
- Roofing
- Structural Steel Work (Ironworker)
- Yacht Service Technician



## CERTIFICATION/LICENSURE EXAMS

*Industry credentials improve your chances for employment!*

Students will be prepared to take an approved State and/or nationally recognized industry certification or licensure exam in their field of study (conditions apply). Students who take and pass their exam(s) may be eligible to receive reimbursement for the cost of their exam(s). See your Certified School Counselor/Advisor for details. Below is a partial list of certifications available to ATC students. Please be advised that this list is subject to change.

- Adobe Certified Associate (ACA):  
Flash, Photoshop Creative Cloud,  
Dreamweaver, Illustrator  
InDesign, Premiere Pro
- Aerospace/Aircraft Assembly (AAA)
- Aircraft Electronic Technician (AET)
- Associate Certified Electronics Technician (CETa)
- Automotive Service Excellence (ASE)  
(Individual Certified ASE Exams through Master Tech)
- Avionics Electronics Technician
- Certified Clinical Hemodialysis Technician (CCHT)
- Certified Clinical Medical Assistant (CCMA)
- Certified Coding Associate (CCA)
- Certified Coding Specialist (CCS)
- Certified Dental Assistant (CDA)
- Certified Drafter – Architecture (ADDA)
- Certified EKG Technician (CET)
- Certified Food Protection Manager (ServSafe®)
- Certified Internet Web (CIW)  
Java Script Specialist
- Certified Medical Administrative Assistant (CMAA)
- Certified Nursing Assistant (CNA)
- Certified Pharmacy Technician (CPhT)
- Certified Registered Central Service Technician (CRCST)
- Certified Solidworks Associate-Academic (CSWA)
- Certified Solidworks Professional - Academic (CSWP)
- CompTIA (Computer Technology Industry Association)  
A+, Network+, Security+
- Florida Expanded Duties and Dental Radiography
- ESCO HVAC Excellence Employment Ready (ER):  
EPA Section 608 Universal, R-410A, Air  
Conditioning, Electric Heat, Electrical,  
Gas Heat, Heat Pump, Light Commercial  
Air Conditioning, Light Commercial  
Refrigeration
- Licensed Practical Nurse (LPN) (NCLEX)
- MasterCam Associate Certification  
Mill Design & Tool Paths
- Microsoft Office Specialist (MOS)
- Microsoft Office Master
- Microsoft Technology Associate (MTA)  
(IT Infrastructure & Database)
- NCCER:  
Core  
Carpentry I & 2
- NIMS: CNC Mill Operations
- Orthopaedic Technologist Certified (OTC)
- OSHA 10 Hour Safety Course
- Quickbooks Certified User
- Welder  
3G, 4G FCAW  
3G, 4G SMAW



Atlantic Technical College is a Pearson VUE and Certiport Authorized Testing Center. Pearson VUE and Certiport offer innovative computer-based testing solutions through secure electronic test delivery.



# ATLANTIC TECHNICAL COLLEGE

## 2020 - 2021 CALENDARS

### Career & Technical Education (CTE) Program Enrollment Calendar

	WINTER 2021		SUMMER 2021
	Term 3 (47 Days)	Term 4 (51 Days)	Term 5 (42 Days)
<b>Re-Registration</b> (current students):	November 15	N/A	May 17
<b>Open Registration</b> (new students)	Ongoing	N/A	Ongoing
<b>Term Begins:</b>	<b>January 11</b>	<b>March 29</b>	<b>June 11</b>
Early Release Days	February 18 March 18	April 8 June 9	
Holiday/School Closed	January 16 – 18 February 13 – 15 March 20 – 28	April 2 – 4 May 29 – 31	July 3 – 5
No Classes: Planning Days	March 19	June 10	
Last Day of Term (Daytime)	<b>March 18</b>	<b>June 9</b>	<b>August 10</b>
Last Day of Term (Evening)	<b>March 18</b>	<b>June 9</b>	<b>August 10</b>

### Pre-College Programs Enrollment Calendar

	Tri B 2020 - 2021 (70 Days)	Tri C 2021 (75 Days)
	November 30	April 5
<b>Re-Registration</b> (current students):	<b>Ongoing</b>	<b>Ongoing</b>
<b>Open Registration</b> (new students)	<b>Ongoing</b>	<b>Ongoing</b>
<b>Trimester Begins</b>	<b>January 4</b>	<b>April 26</b>
Early Release Days	January 7 February 18 March 18 April 8	June 9
Holiday/School Closed	December 19 – January 3 January 16 – 18 February 13 – 15 March 20 – 27 April 2 – 3	May 29 – 31 July 3 – 5
No Classes: Planning Day	March 19	June 10
<b>Last Day of Trimester</b> (Daytime)	<b>April 23</b>	<b>August 10</b>
<b>Last Day of Trimester</b> (Evening)	<b>April 22</b>	<b>August 10</b>

# Atlantic Technical College and Technical High School

[www.atlantictechnicalcollege.edu](http://www.atlantictechnicalcollege.edu)



Robert B. Crawford, Director

Brian Bush, Assistant Director

John M. Felser, Assistant Director

Tonya S. Hefley, Assistant Director

Vicky LaPorte, Assistant Director

Dr. Wesley M. Mabin, Jr., Assistant Director

Andre L. Newton, Assistant Director

Neeta E. Rancourt, Assistant Director



Main Campus - Coconut Creek  
4700 Coconut Creek Parkway  
Coconut Creek, FL 33063  
754-321-5100

Arthur Ashe, Jr. Campus  
1701 NW 23rd Avenue  
Fort Lauderdale, FL 33311  
754-322-2800

ESOL Campus @ Coconut Creek HS  
1400 NW 44th Avenue  
Coconut Creek, FL 33066  
754-321-5350



[www.CareerinayearFL.com](http://www.CareerinayearFL.com)

Stay Connected



The School Board of Broward County, FL

Dr. Rosalind Osgood, Chair  
Laurie Rich Levinson, Vice Chair

Lori Alhadeff / Patricia Good  
Debra Hixon / Donna P. Korn  
Sarah Leonardi / Ann Murray  
Nora Rupert

Robert W. Runcie  
Superintendent of Schools

[www.browardschools.com](http://www.browardschools.com)



The School Board of Broward County, Florida, prohibits any policy or procedure which results in discrimination on the basis of age, color, disability, gender identity, gender expression, genetic information, marital status, national origin, race, religion, sex or sexual orientation. The School Board also provides equal access to the Boy Scouts and other designated youth groups. Individuals who wish to file a discrimination and/or harassment complaint may call the Director, Equal Education Opportunities/ADA Compliance Department & District's Equity Coordinator/Title IX Coordinator at 754-321-2150 or Teletype Machine (TTY) 754-321-2158. Individuals with disabilities requesting accommodations under the Americans with Disabilities Act Amendments Act of 2008, (ADAAA) may call Equal Educational Opportunities/ADA Compliance Department at 754-321-2150 or Teletype Machine (TTY) 754-321-2158.